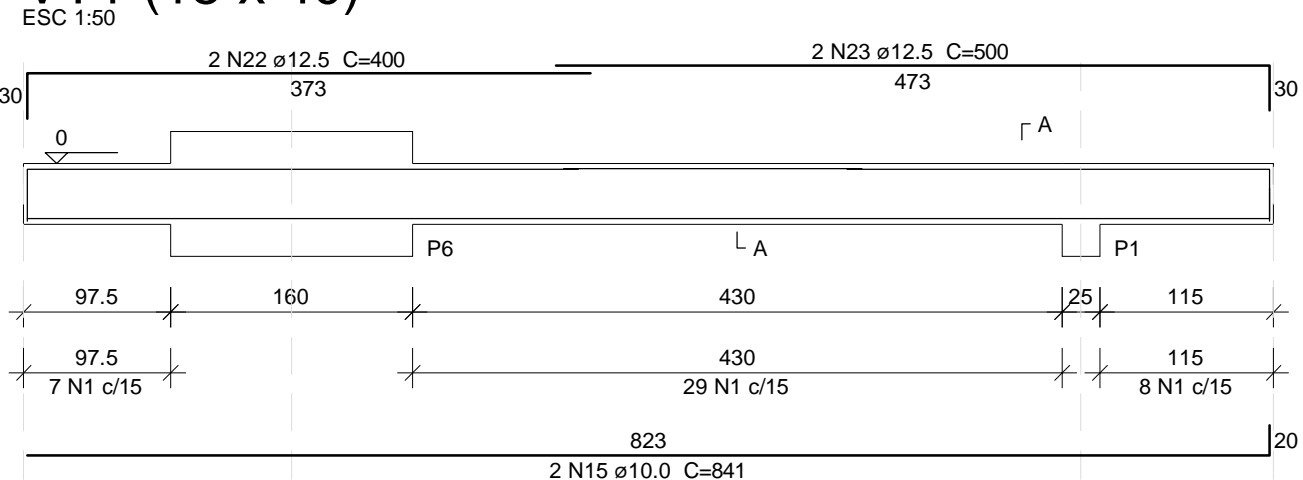
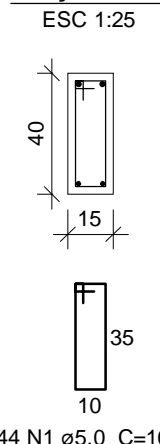


VT1 (15 x 40)

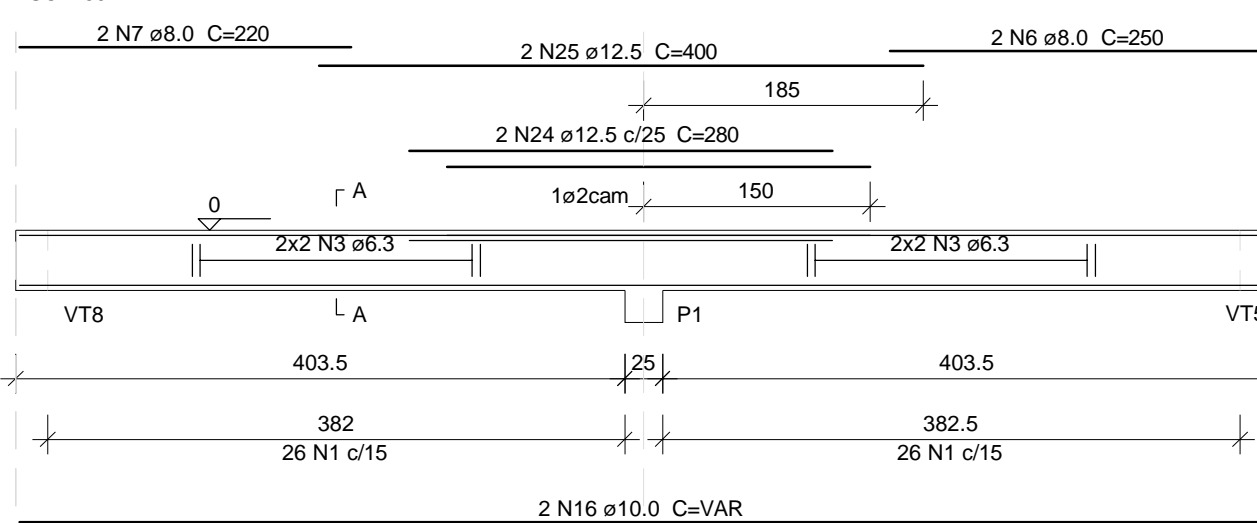


SEÇÃO A-A

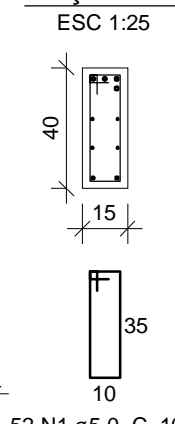


VT2 (15 x 40)

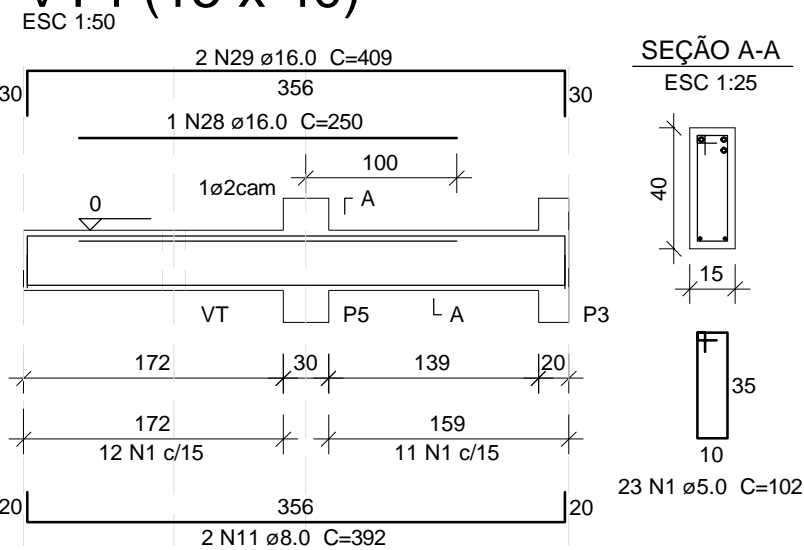
VER CURVATURA NA FORMA
ESC 1:50



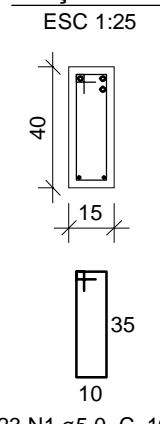
SEÇÃO A-A



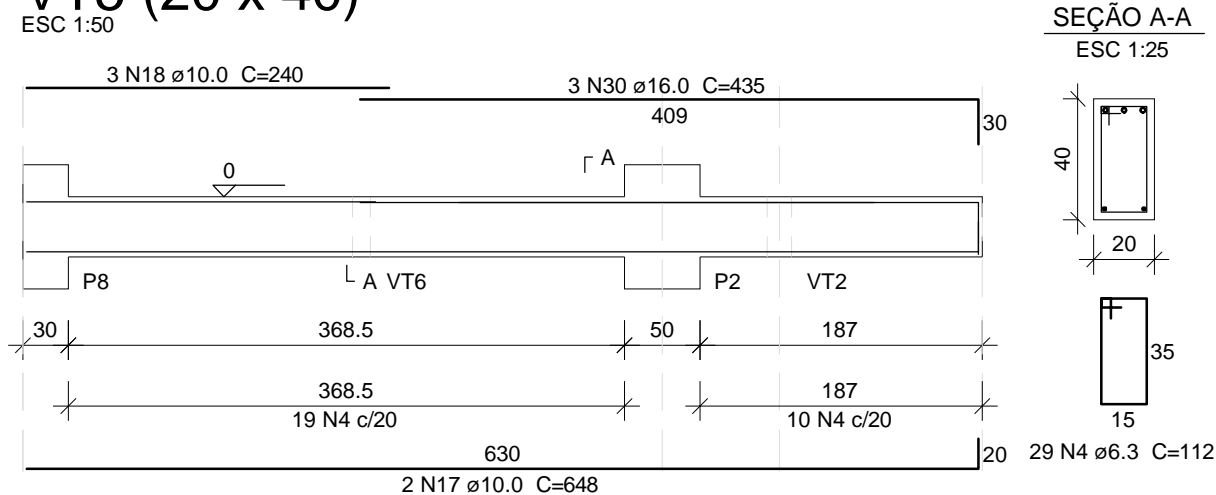
VT4 (15 x 40)



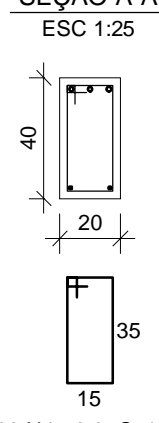
SEÇÃO A-A



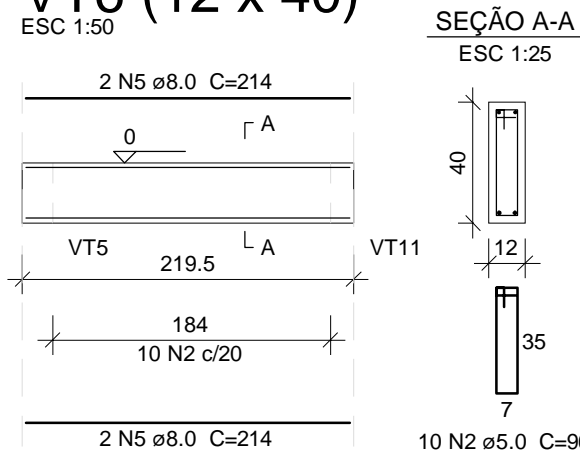
VT5 (20 x 40)



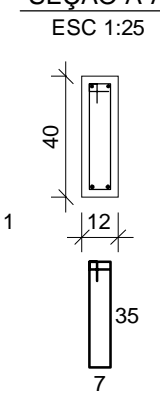
SEÇÃO A-A



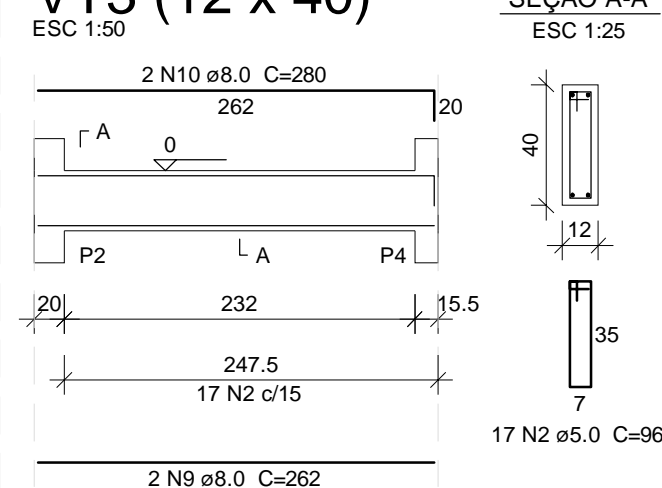
VT6 (12 x 40)



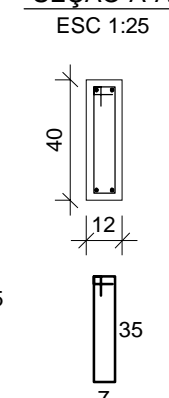
SEÇÃO A-A



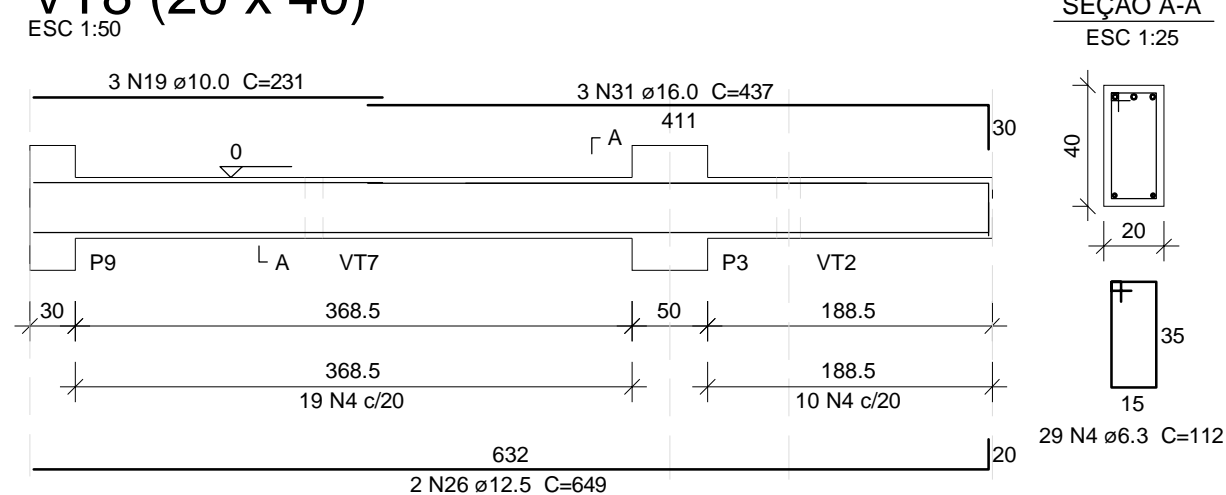
VT3 (12 x 40)



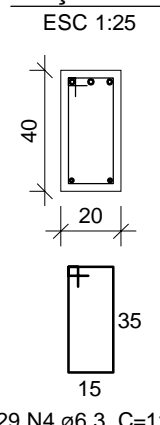
SEÇÃO A-A



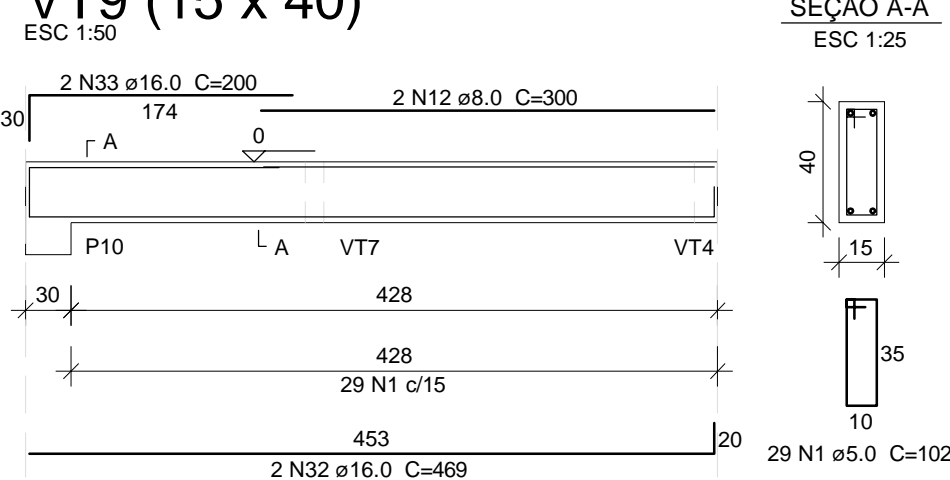
VT8 (20 x 40)



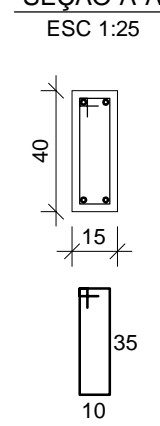
SEÇÃO A-A



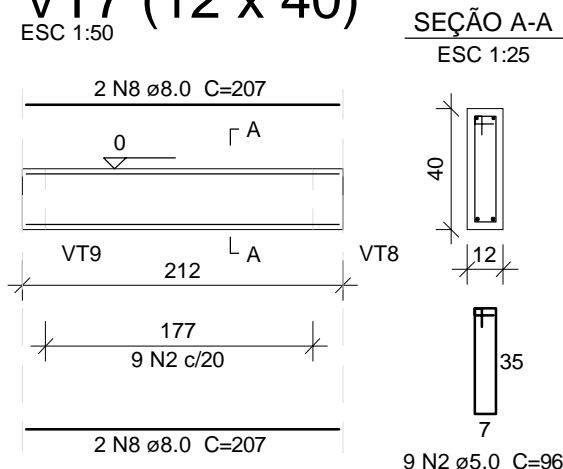
VT9 (15 x 40)



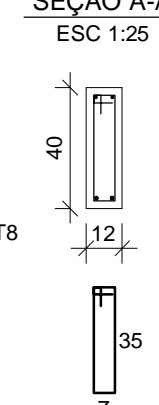
SEÇÃO A-A



VT7 (12 x 40)

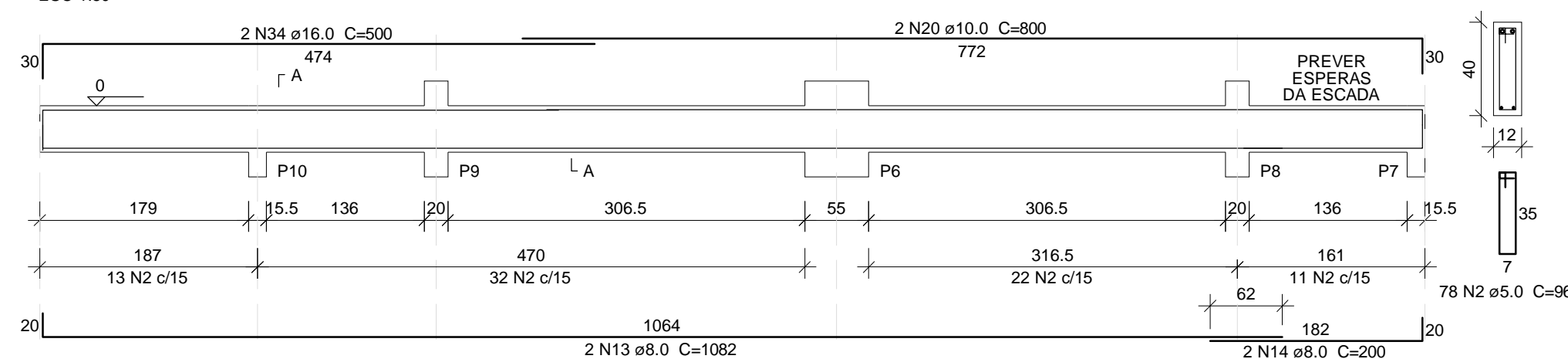


SEÇÃO A-A

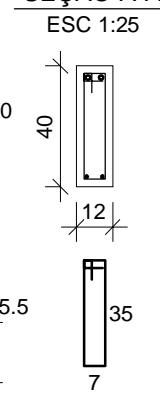


VT10 (12 x 40)

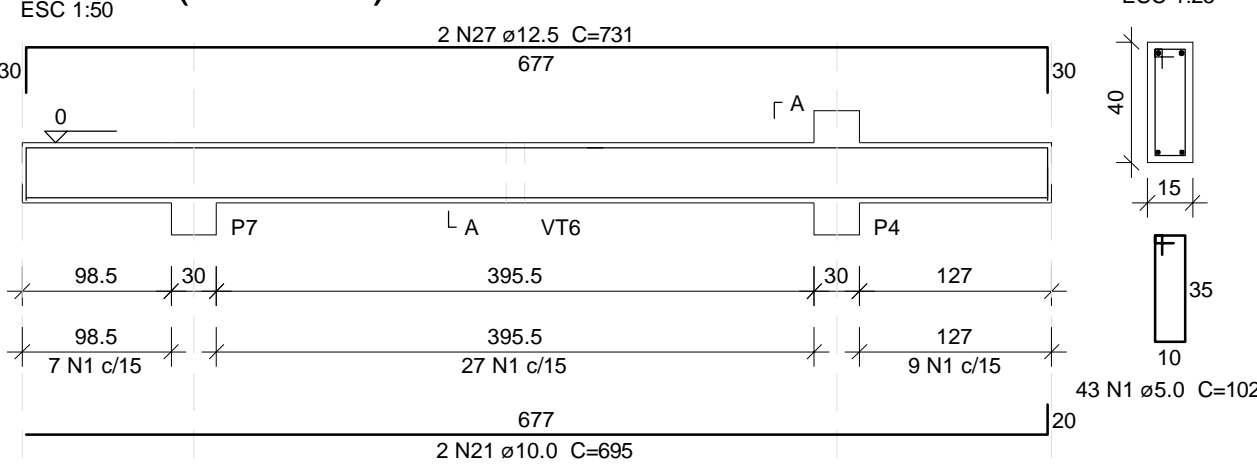
VER MUDANÇA DE DIREÇÃO NA FORMA E PREVER ESPERA DA ESCADA
ESC 1:50



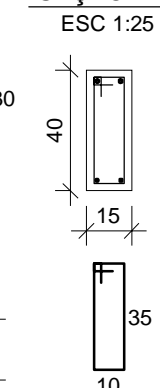
SEÇÃO A-A



VT11 (15 x 40)



SEÇÃO A-A



Relação do aço

AÇO	N	DIAM (mm)	QUANT	C.UNIT (cm)	C.TOTAL (cm)
CA60	1	5.0	191	102	19482
	2	5.0	114	96	10944
CA50	3	6.3	8	CORR	3384
	4	6.3	58	112	6496
	5	8.0	4	214	856
	6	8.0	2	250	500
	7	8.0	2	220	440
	8	8.0	4	207	828
	9	8.0	2	262	524
	10	8.0	2	280	560
	11	8.0	2	392	784
	12	8.0	2	300	600
	13	8.0	2	1082	2164
	14	8.0	2	200	400
	15	10.0	2	841	1682
	16	10.0	2	VAR	VAR
	17	10.0	2	648	1296
	18	10.0	3	240	720
	19	10.0	3	231	693
	20	10.0	2	800	1600
	21	10.0	2	695	1390
	22	12.5	2	400	800
	23	12.5	2	500	1000
	24	12.5	2	280	560
	25	12.5	2	400	800
	26	12.5	2	649	1298
	27	12.5	2	731	1462
	28	16.0	1	250	250
	29	16.0	2	409	818
	30	16.0	3	435	1305
	31	16.0	3	437	1311
	32	16.0	2	469	938
	33	16.0	2	200	400
	34	16.0	2	500	1000

Resumo do aço

AÇO	DIAM (mm)	C.TOTAL (m)	PESO + 10% (kg)
CA50	6.3	98.8	26.6
	8.0	76.6	33.2
	10.0	90.4	61.3
	12.5	59.2	62.7
	16.0	60.3	104.6
CA60	5.0	304.3	51.6
PESO TOTAL (kg)			
CA50		288.4	
CA60		51.6	

Volume de concreto (C-40) = 3.82 m³
Área de forma = 60.11 m²

0	EMIÇÃO INICIAL	DADAM	15/03/16
REV.	DESCRIÇÃO DAS REVISÕES	RESPONSÁVEL	DATA
Obra	CAFÉ MIRANTE - GOV. CELSO RAMOS		Data
Assunto	ARMAÇÃO DAS VIGAS DO TÉRREO		Folha
			3/7