

Relação do aço

S1 S5 3xS8		S2 S6		S3 2xS7	
AÇO	N	DIAM (mm)	QUANT	C.UNIT (cm)	C.TOTAL (cm)
CA50	1	6.3	12	82	984
	2	6.3	12	97	1164
	3	6.3	18	117	2106
	4	6.3	18	127	2286
	5	6.3	12	107	1284
	6	8.0	30	417	12510
	7	10.0	6	95	570
	8	10.0	6	110	660
	9	10.0	10	130	1300
	10	10.0	8	155	1240
	11	10.0	11	135	1485
	12	10.0	9	165	1485
	13	10.0	30	638	19140
	14	12.5	22	1056	23232
	15	12.5	27	649	17523
	16	16.0	46	871	40066

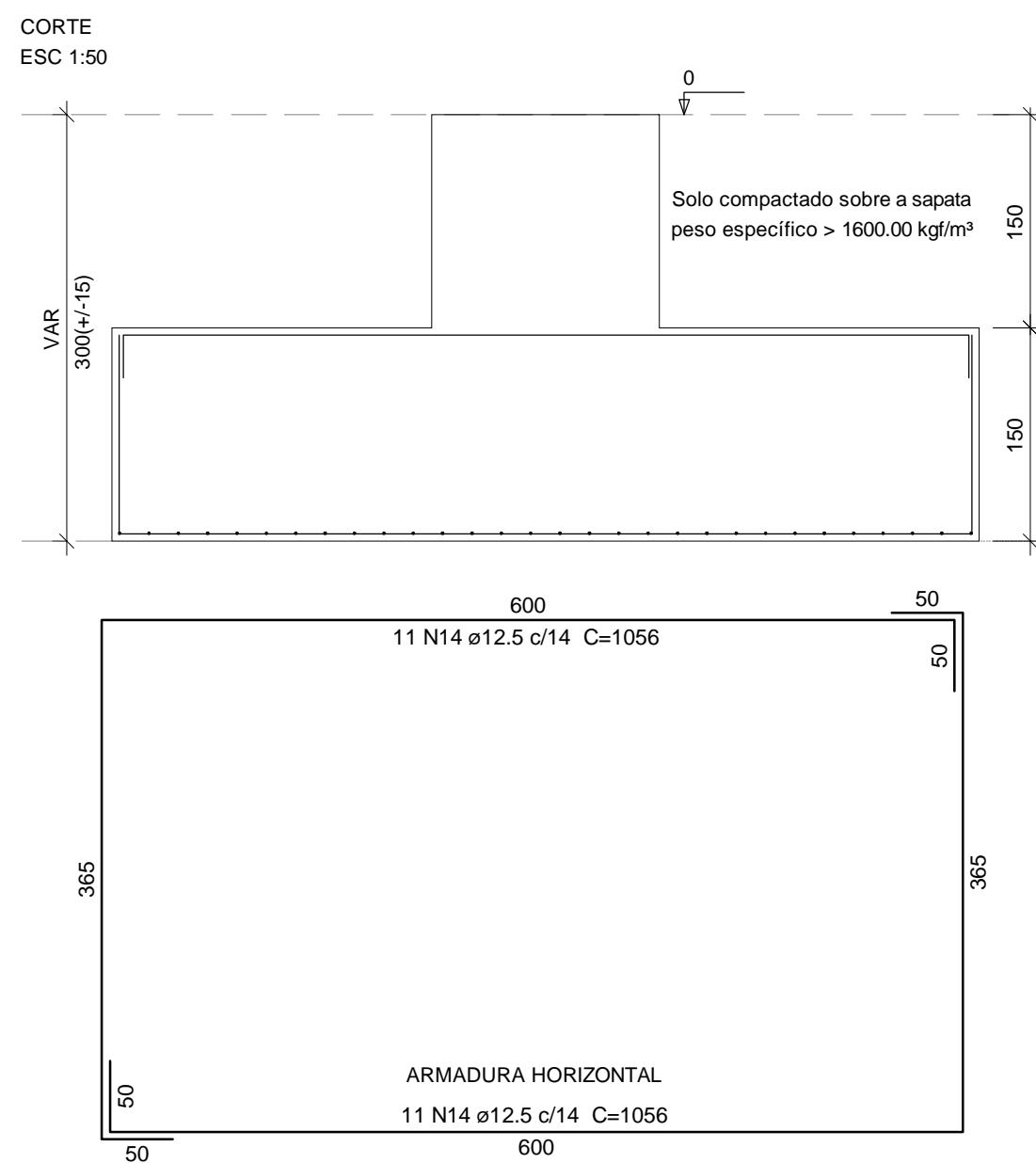
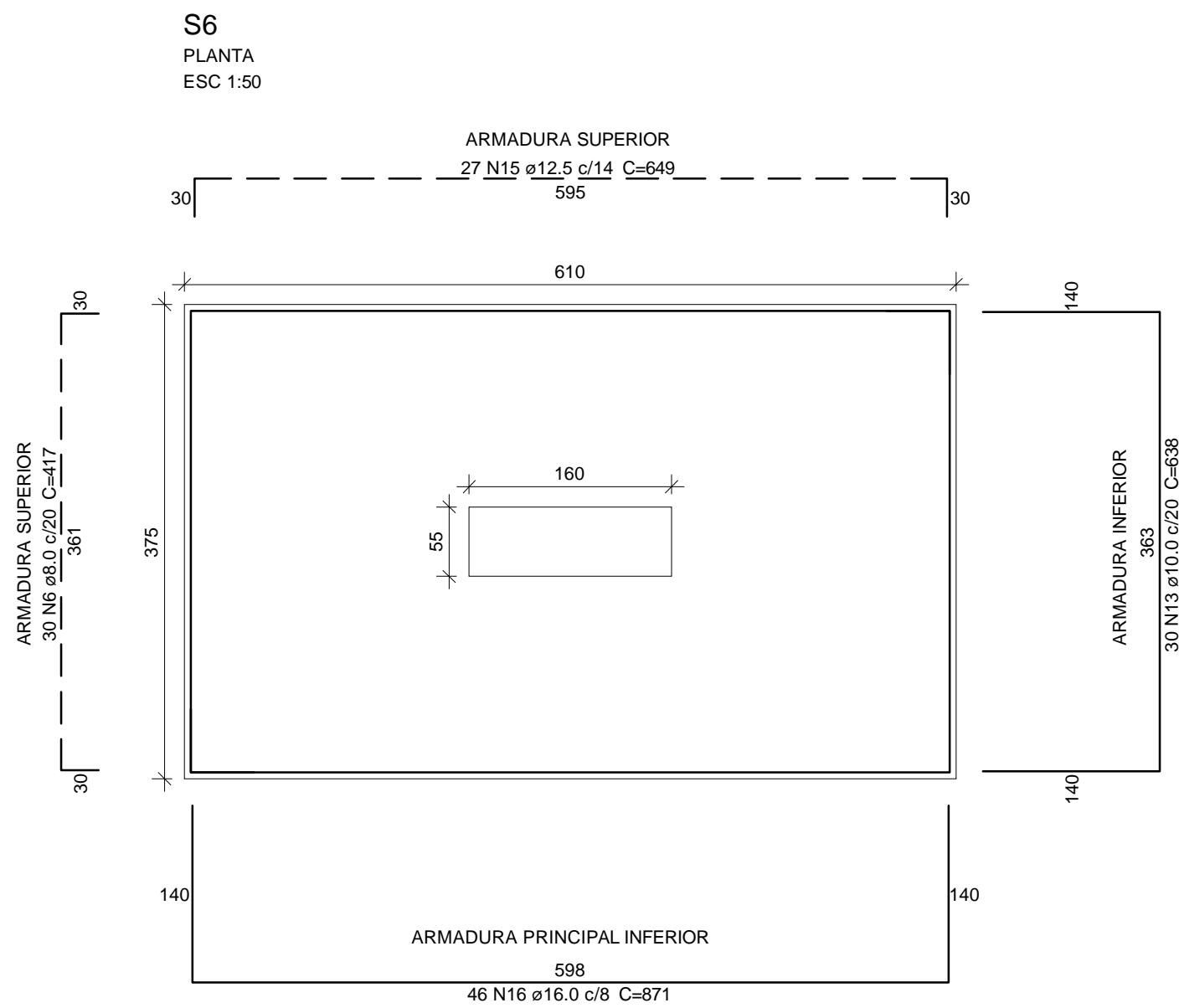
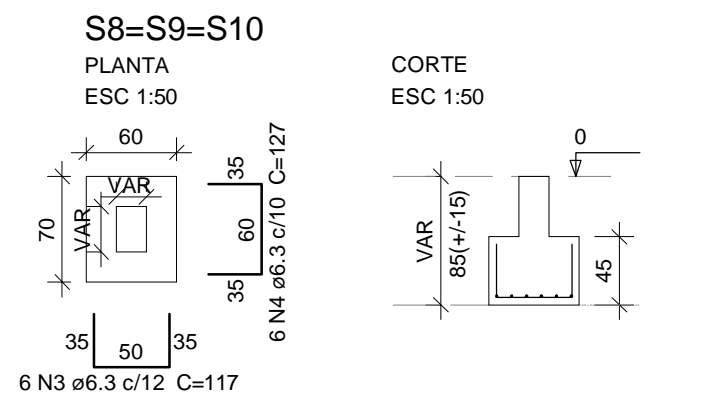
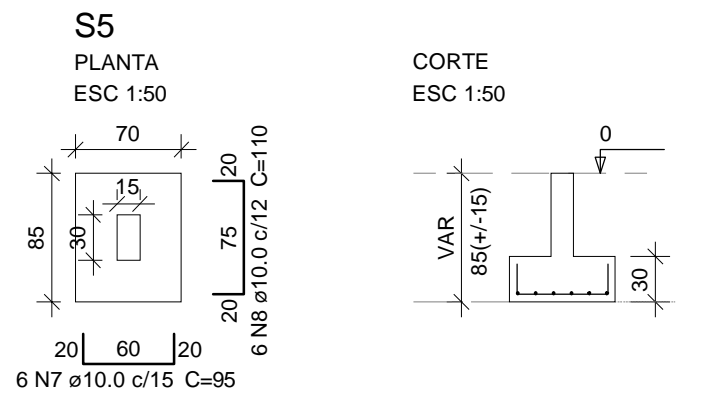
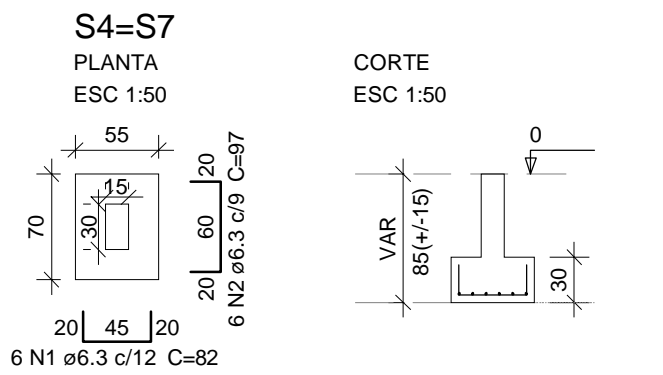
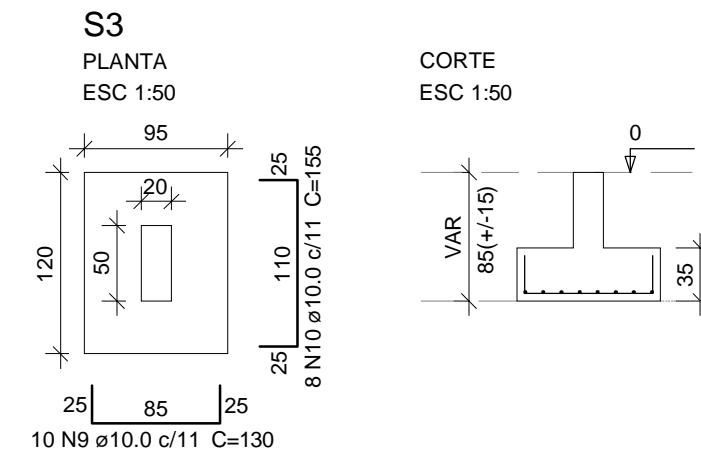
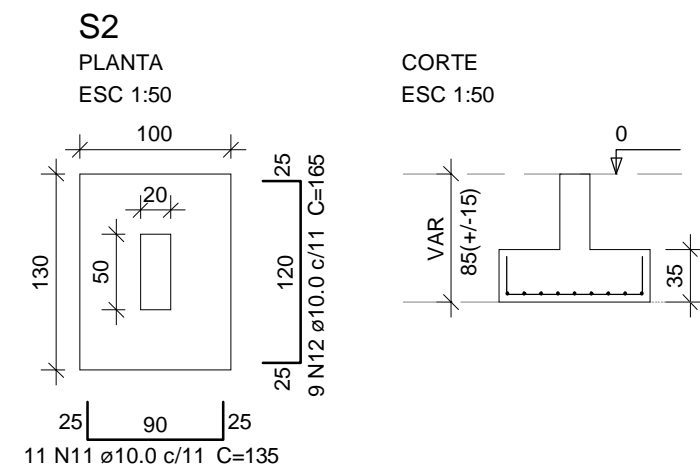
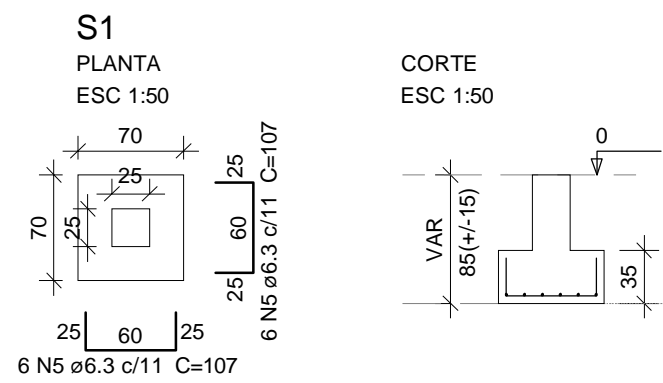
Resumo do aço

AÇO	DIAM (mm)	C.TOTAL (m)	PESO + 10% (kg)
CA50	6.3	78.3	21.1
	8.0	125.1	54.3
	10.0	258.8	175.5
	12.5	407.6	431.9
	16.0	400.7	695.6
PESO TOTAL (kg)			
CA50	1378.4		

Volume de concreto (C-40) = 36.31 m³
 Área de forma = 39.59 m²

LEGENDA

— — — — — Armadura Negativa
 — — — — — Armadura Positiva



0	EMISSÃO INICIAL	DADAM	15/03/16
REV.	DESCRIÇÃO DAS REVISÕES	RESPONSÁVEL	DATA
Obra	CAFÉ MIRANTE - GOV. CELSO RAMOS		Data MAR/16
Assunto	ARMAÇÃO DAS SAPATAS		Folha 1/7