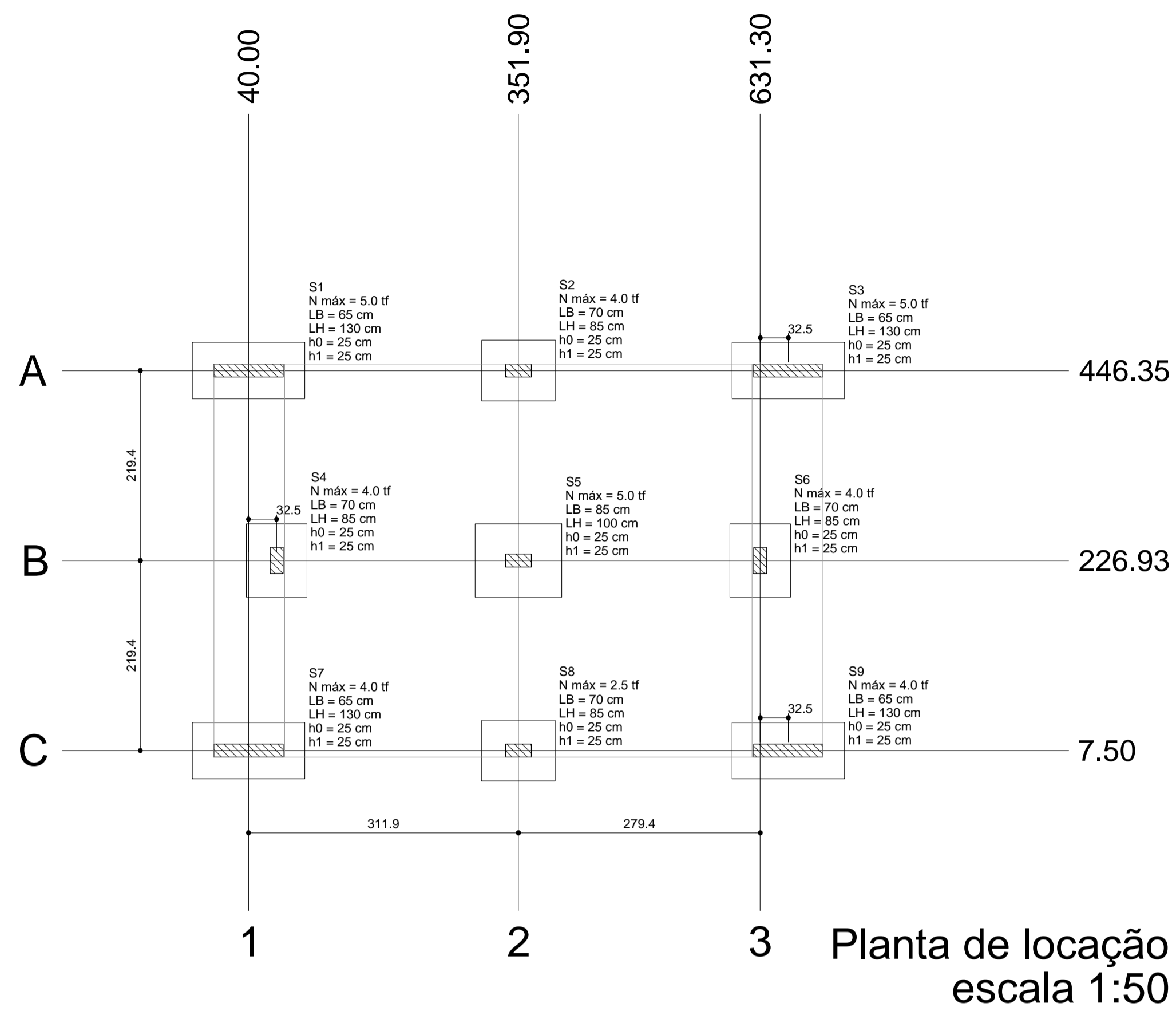
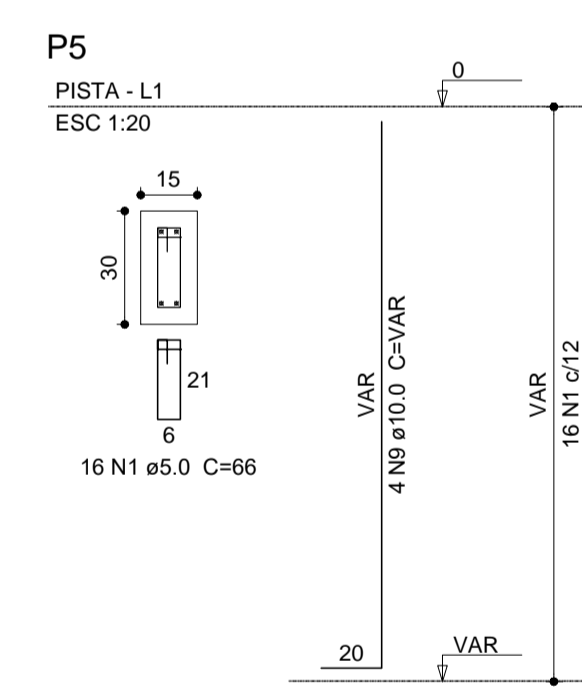
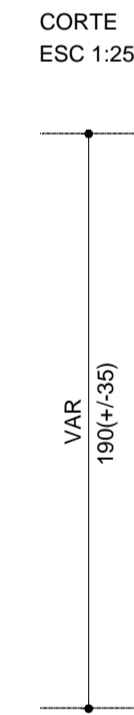
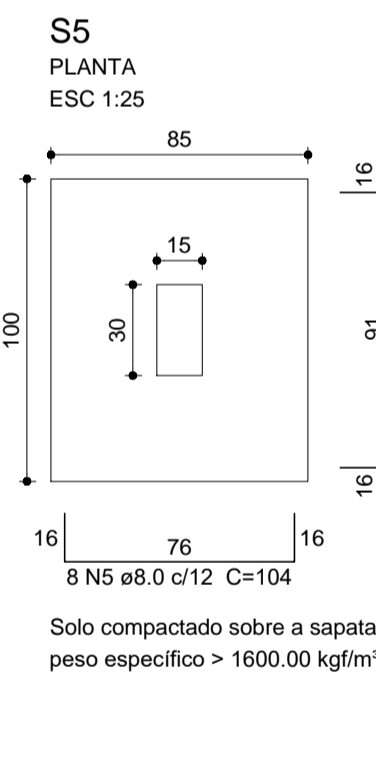
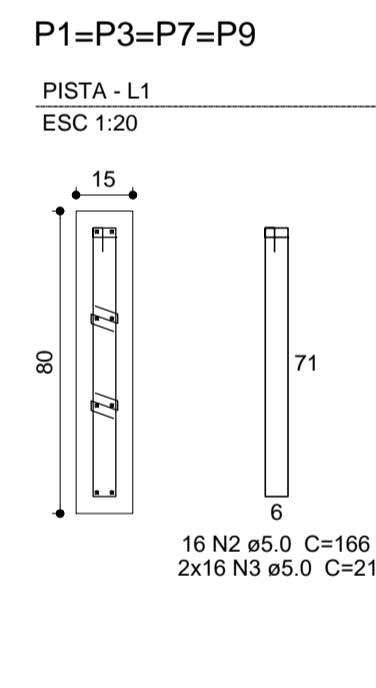
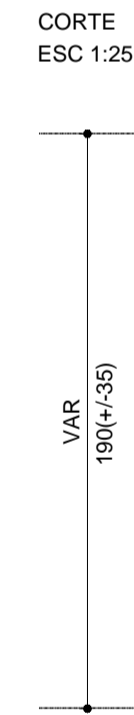
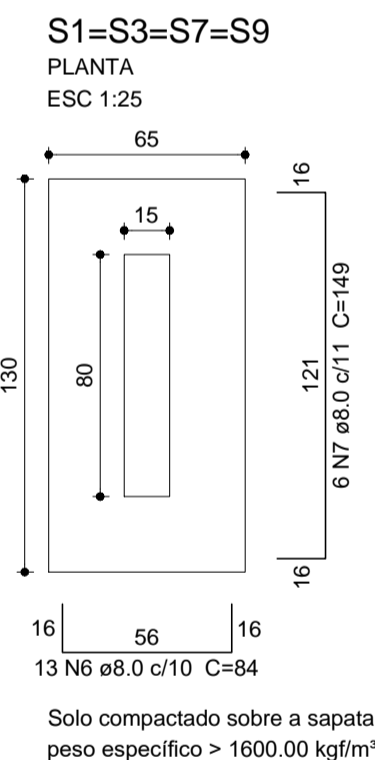
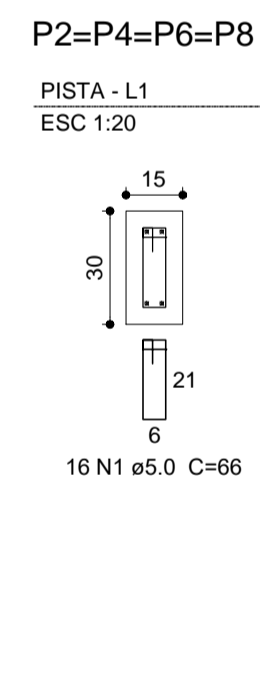
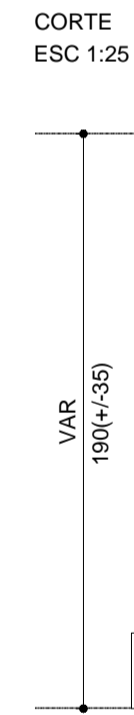
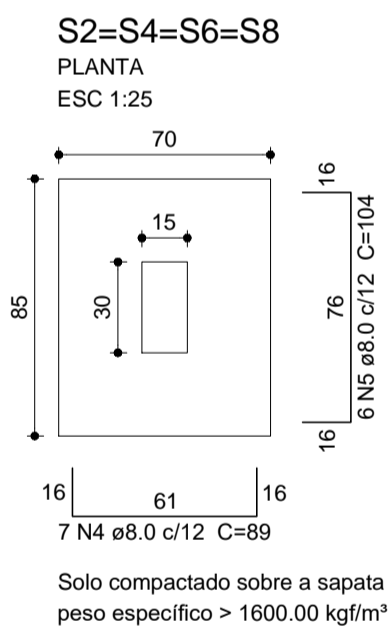
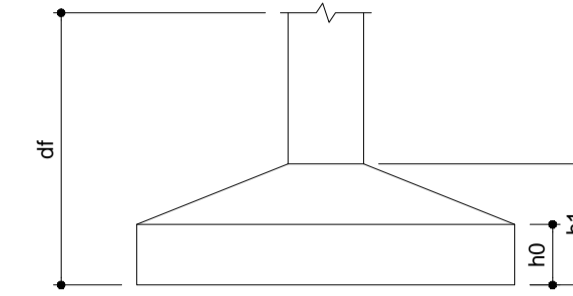


OBS: O SOLO ABAIXO DAS SAPATAS DEVERÁ SER COMPACTADO ANTES DA CONCRETAGEM



Nome	Seção (cm)	X (cm)	Y (cm)	Pilar			Fundação							
				Carga Máx. (tf)	Carga Min. (tf)	Mx (kgf.m)	My (kgf.m)	Fx (tf)	Fy (tf)	Lado B (cm)	Lado H (cm)	h0 / ha (cm)	h1 / hb (cm)	df (cm)
P1	15x80	40.00	446.35	5.0	4.0	0	0	0.5	0.5	65	130	25	25	190
P2	15x30	351.90	446.35	4.0	3.0	0	0	0.0	0.5	70	85	25	25	190
P3	15x80	663.80	446.35	5.0	4.0	0	0	0.5	0.5	65	130	25	25	190
P4	15x30	72.50	226.93	4.0	3.0	0	0	0.5	0.5	70	85	25	25	190
P5	15x30	351.90	226.93	5.0	3.5	0	0	0.0	0.5	85	100	25	25	190
P6	15x30	631.30	226.93	4.0	3.0	0	0	0.5	0.5	70	85	25	25	190
P7	15x80	40.00	7.50	4.0	3.0	0	0	0.5	0.5	65	130	25	25	190
P8	15x30	351.90	7.50	2.5	2.0	0	0	0.0	0.5	70	85	25	25	190
P9	15x80	663.80	7.50	4.0	3.0	0	0	0.5	0.5	65	130	25	25	190



**Relação do aço**

AÇO	N	DIAM (mm)	QUANT	S5	
				C.UNIT (cm)	C.TOTAL (cm)
CA60	1	5.0	80	66	5280
	2	5.0	64	166	10624
	3	5.0	128	21	2688
CA50	4	8.0	28	89	2492
	5	8.0	32	104	3328
	6	8.0	52	84	4368
	7	8.0	24	149	3576
	8	8.0	7	119	833
	9	10.0	52	VAR	VAR

**Resumo do aço**

AÇO	DIAM (mm)	C.TOTAL (m)	PESO + 10% (kg)
CA50	8.0	146	63.4
CA60	10.0	103.5	70.2
CA60	5.0	186	31.5
<b>PESO TOTAL (kg)</b>			
CA50		133.5	
CA60		31.5	

Volume de concreto (C-30) = 2.99 m³  
Área de forma = 30.92 m²

- OBS:
- TODAS AS MEDIDAS DEVERÃO SER CONFERIDAS NO LOCAL
  - SEGUIR PARÂMETROS DA NBR 9050.

 <b>PREFEITURA MUNICIPAL DE GOV. CELSO RAMOS</b> SUPERINTENDÊNCIA REGIONAL SUL - FLORIANÓPOLIS / SC SERVIÇO DE ENGENHARIA E PATRIMÔNIO IMOBILIÁRIO	
OBRA: PROJETO ESTRUTURAL - PRAÇA CANTO DOS GANCHOS	
ENDEREÇO: TRAVESSA 21, S/N, CANTO DOS GANCHOS, GOV CELSO RAMOS - SANTA CATARINA	
PROPRIETÁRIO: PREFEITURA MUNICIPAL DE GOVERNADOR CELSO RAMOS CNPJ: 09.379.550/0001-89	PRANCHAS:
AUTORES DO PROJETO: HELENA CERON DE OLIVEIRA ENGENHEIRA CIVIL / CREA-SC 18805-2	
ESCALA: INDICADA	ASSUNTO: <b>PLANTA DE LOCAÇÃO E SAPATAS</b>
DATA: OUTUBRO/2017	

01 / 03