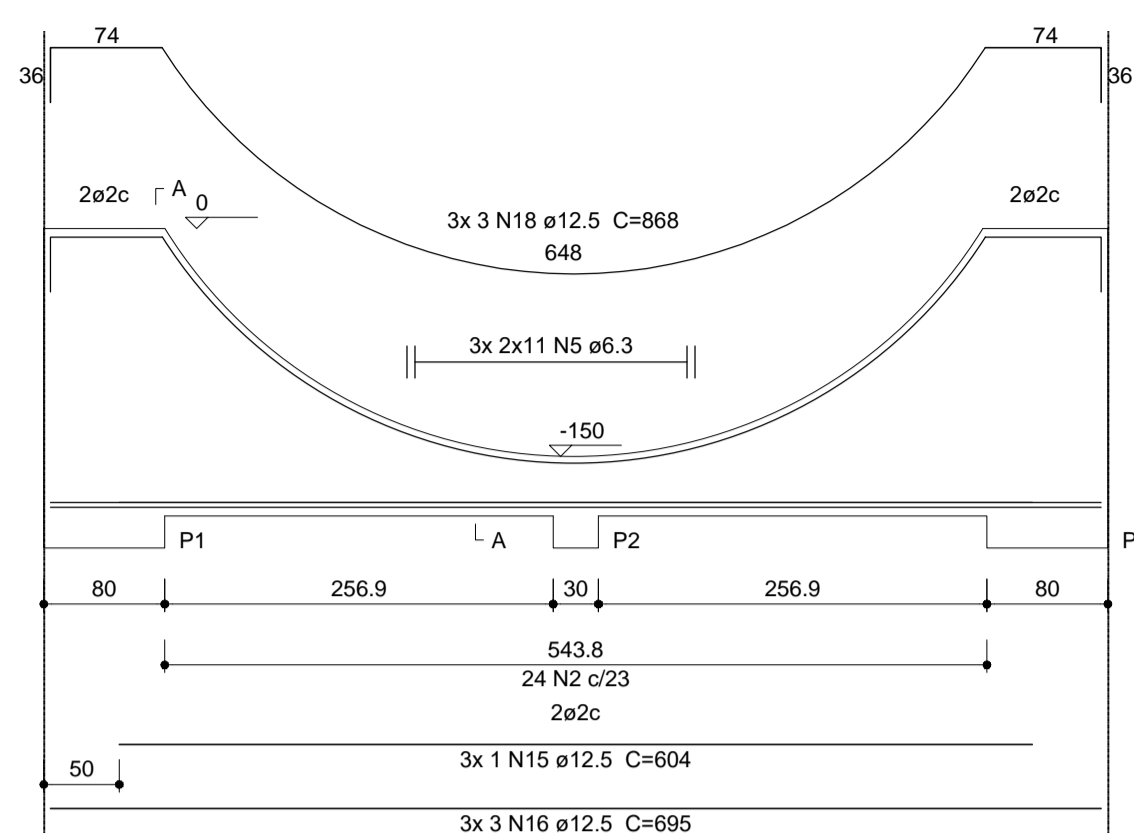
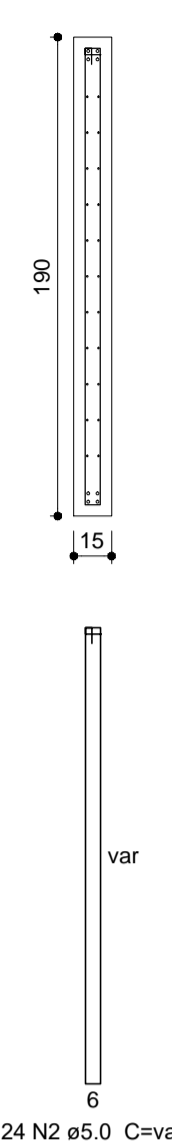


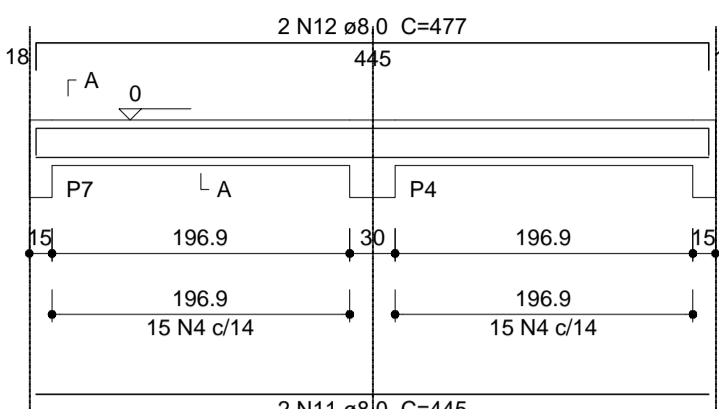
V1= V2 =V3
ESC 1:50



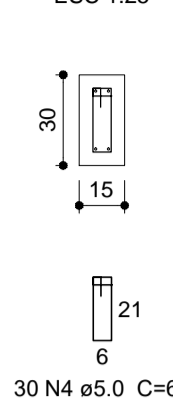
SEÇÃO A-A
ESC 1:30



V5
ESC 1:50



SEÇÃO A-A
ESC 1:25



Relação do aço

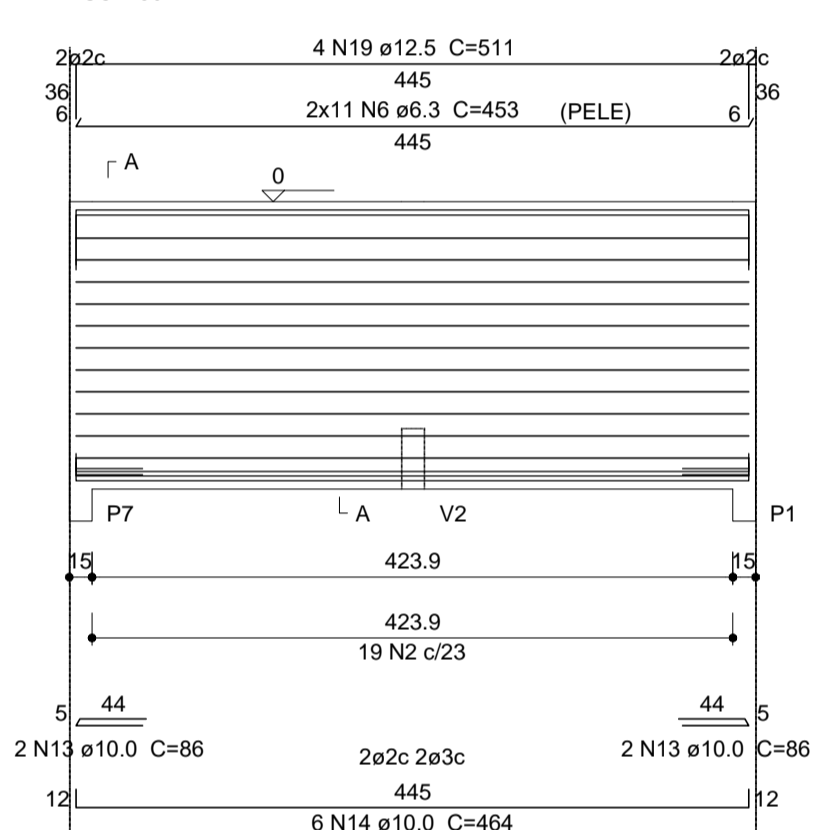
AÇO	N	DIAM (mm)	QUANT	C.UNIT (cm)	C.TOTAL (cm)
CA60	1	5.0	2	234	468
	2	5.0	62	386	23932
	3	5.0	60	86	5160
	4	5.0	90	86	5940
CA50	5	6.3	22	CORR	15290
	6	6.3	44	453	19932
	11	8.0	6	445	2670
	12	8.0	6	477	2862
	13	10.0	8	86	688
	14	10.0	12	464	5568
	15	12.5	3	604	1812
	16	12.5	9	695	6255
	18	12.5	9	868	7812
	19	12.5	8	511	4088

Resumo do aço

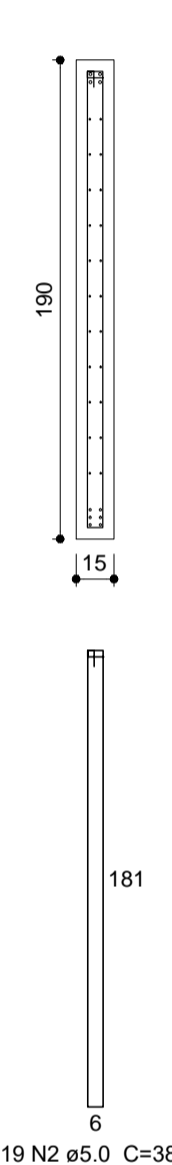
AÇO	DIAM (mm)	C.TOTAL (m)	PESO + 10 % (kg)
CA50	6.3	352.3	94.8
	8.0	111.5	48.4
	10.0	62.6	42.4
	12.5	199.7	219.6
CA60	5.0	355	60.2
PESO TOTAL (kg)			
CA50			405
CA60			60.2

Volume de concreto (C-30) = 6.01 m³
Área de forma = 86.67 m²

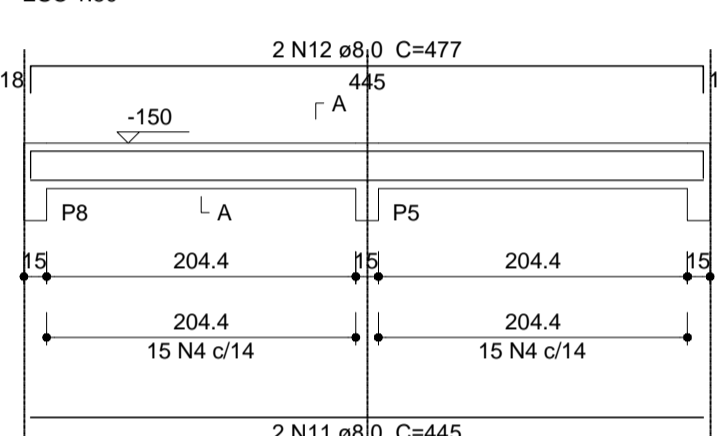
V4
ESC 1:50



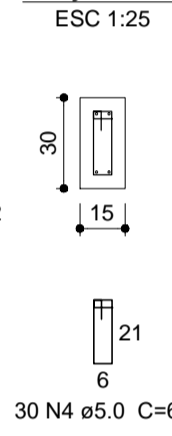
SEÇÃO A-A
ESC 1:30



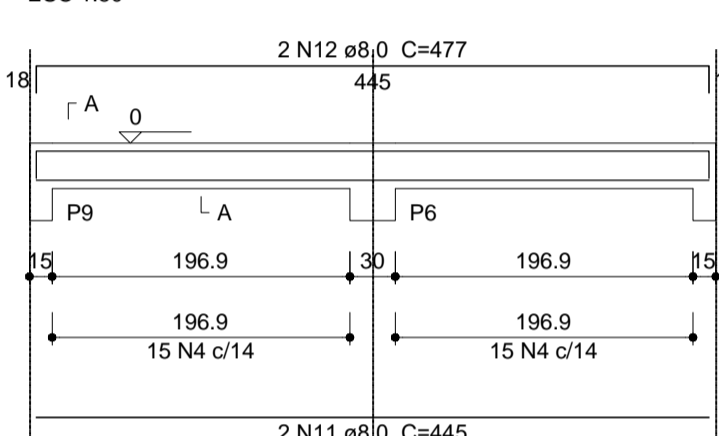
V6
ESC 1:50



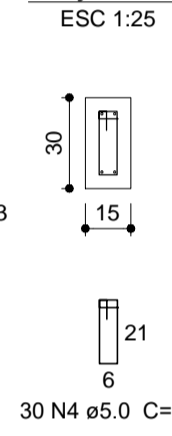
SEÇÃO A-A
ESC 1:25



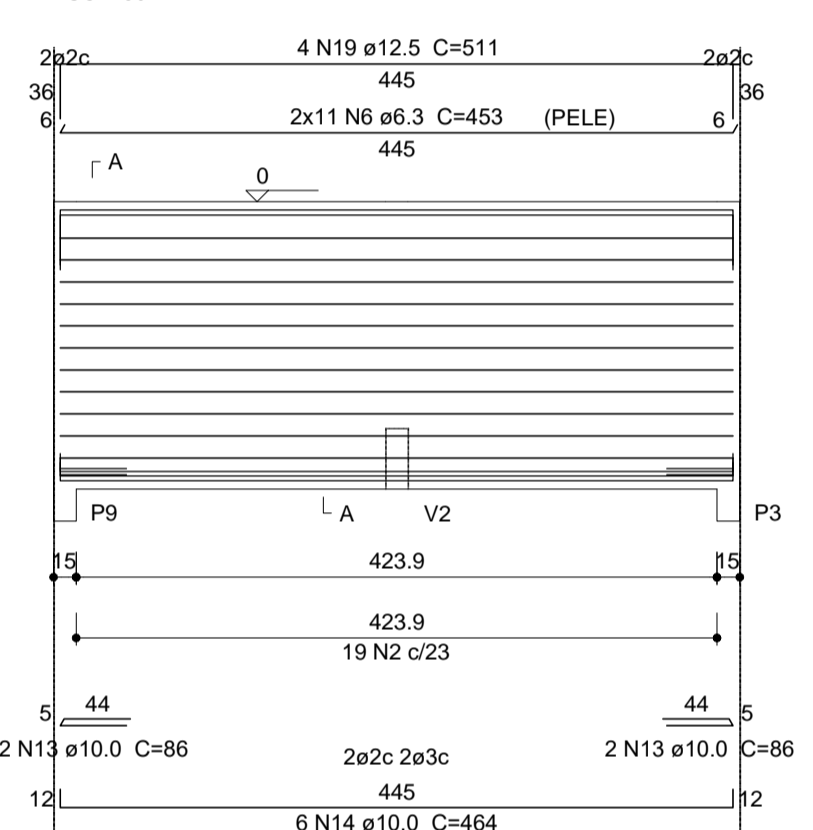
V7
ESC 1:50



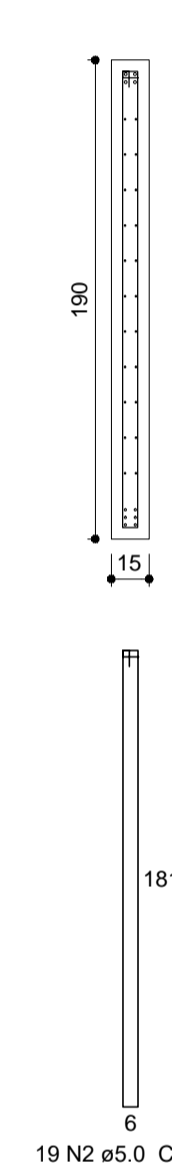
SEÇÃO A-A
ESC 1:25



V8
ESC 1:50

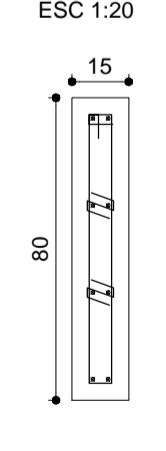


SEÇÃO A-A
ESC 1:30



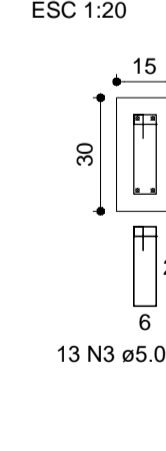
P1=P3=P7=P9

PISTA - L1
ESC 1:20



P2=P4=P5=P6=P8

PISTA - L1
ESC 1:20



Relação do aço

AÇO	N	DIAM (mm)	QUANT	C.UNIT (cm)	C.TOTAL (cm)
CA60	1	5.0	52	166	8632
	2	5.0	104	21	2184
	3	5.0	65	66	4290
CA50	4	10.0	52	VAR	VAR

Resumo do aço

AÇO	DIAM (mm)	C.TOTAL (m)	PESO + 10 % (kg)
CA50	10.0	82.7	56.1
CA60	5.0	151.1	25.6
PESO TOTAL (kg)			
CA50			56.1
CA60			25.6

Volume de concreto (C-30) = 1.06 m³
Área de forma = 18.15 m²

- OBS:
- TODAS AS MEDIDAS DEVERÃO SER CONFERIDAS NO LOCAL.
 - SEGUIR PARÂMETROS DA NBR 9050.



OBRA: PROJETO ESTRUTURAL - PRAÇA CANTO DOS GANCHOS

ENDEREÇO: TRAVESSA 21, S/N, CANTO DOS GANCHOS, GOV CELSO RAMOS - SANTA CATARINA

PROPRIETÁRIO: PREFEITURA MUNICIPAL DE GOVERNADOR CELSO RAMOS
CNPJ: 09.399.850/0001-99

AUTORES DO PROJETO: HELENA CERON DE OLIVEIRA
ENGENHEIRO CIVIL / CREA-SC: 18805-2

ESCALA: INDICADA ASSUNTO: VIGAS E PILARES DO TÉRREO

DATA: OUTUBRO/2017

03/
03