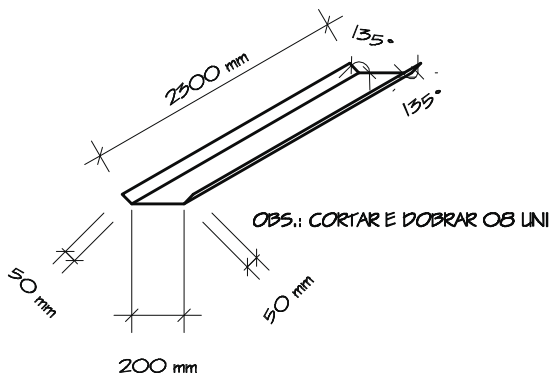


Chapa 1/8" (3000X1200 mm) - 2 uni



Chapa n. 18 (3000X1200 mm) - 1 uni

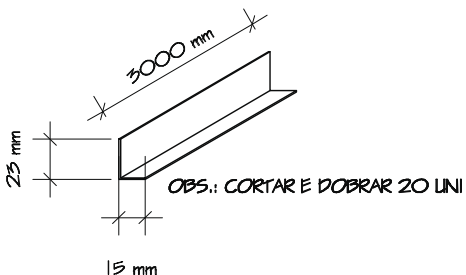
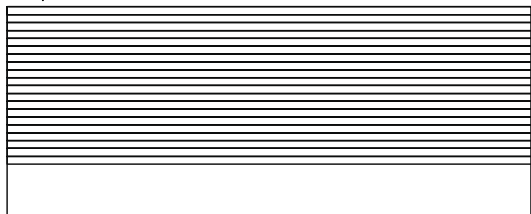
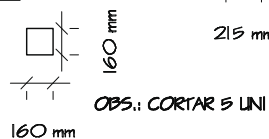
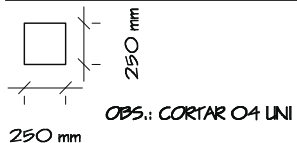
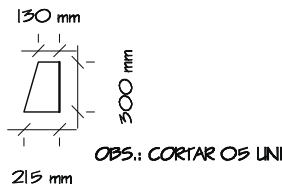
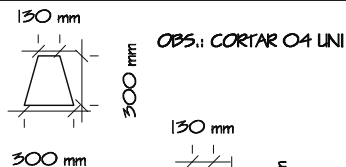
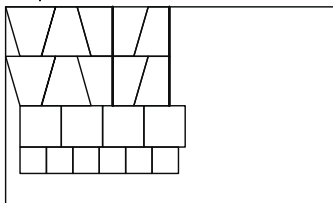


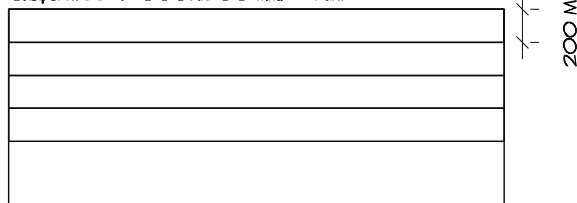
Tabela Quantitativa de Materiais

COBERTURA		
1	Polícarbonato 6 mm	7,96 m ²
2	Chapa n. 24 (h=200 mm)	11,8 m
3	Calha (100X100 mm)	4 m
4	Tubulação (ø 40 mm)	5,60 m
5	Tubo qalvaniz. 100X100 mm	11,80 m
ESTRUTURA		
6	Vidro 8 mm (2100X830 mm)	6 uni
7	Tubo qalvaniz. 100X100 mm	15,60 ms
8	Tubo qalvaniz. 60X40 mm	16 m
9	Cant. (chapa dobrada n. 22)	55 m
10	Baquets	55 m
11	Sup trapézio ch n. 1" (30X30X13cm)	16 uni
12	Chapa n. 1/4" (250X250 mm)	4 uni
13	Chapa n. 1/4" (160X160 mm)	6 uni
14	Bancos (848X350 mm)	8 uni
15	Chapa n.16 (2500X600 mm)	4 uni

Chapa 1/4" - 1 uni



Chapa n. 22 (3000X1200 mm) - 1 uni



OBS.: CORTAR 04 LINI

ABRIGO		
Chapas Cortadas e dobradas		
Resp.:	07 ABR 09	
O.S.	número O.S.	
OBS.:	-	
	-	
	-	