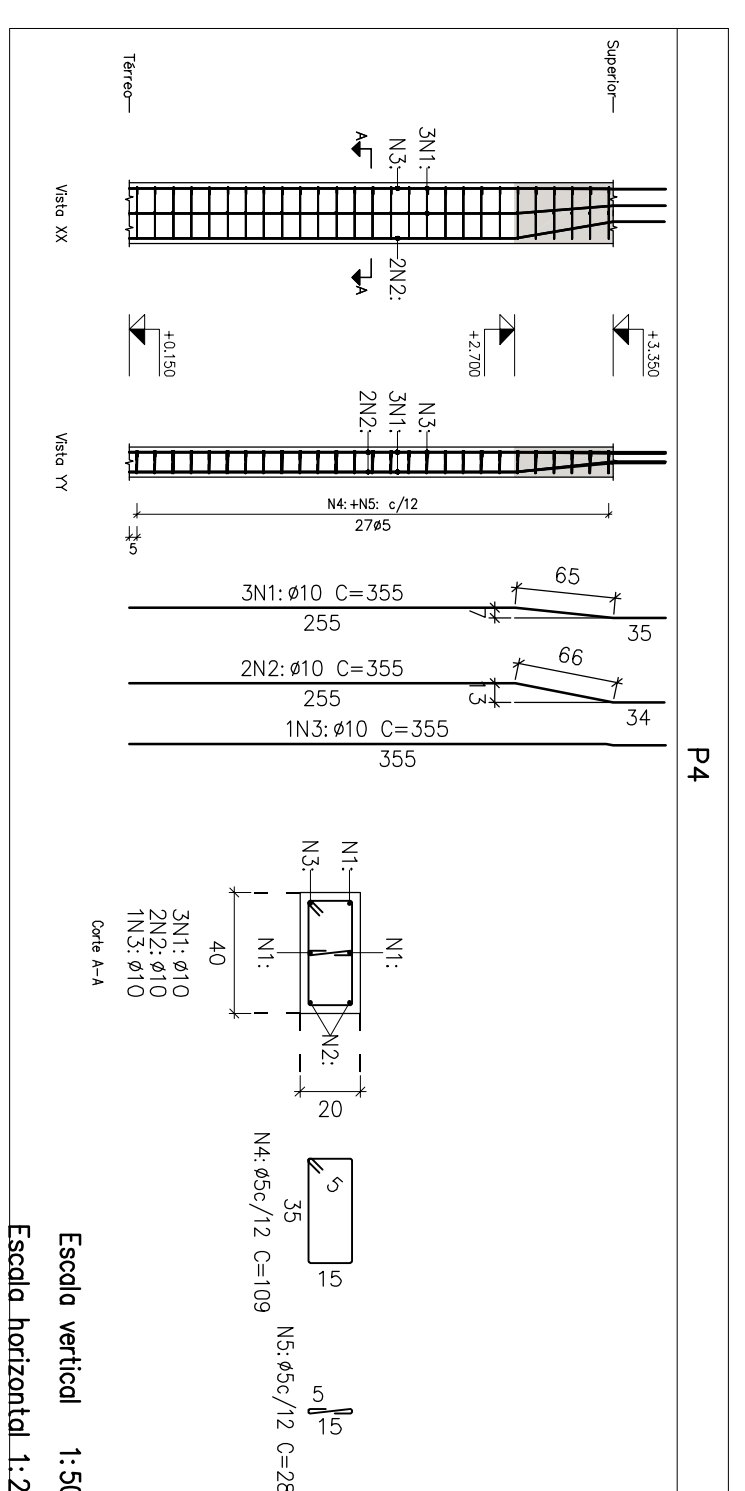
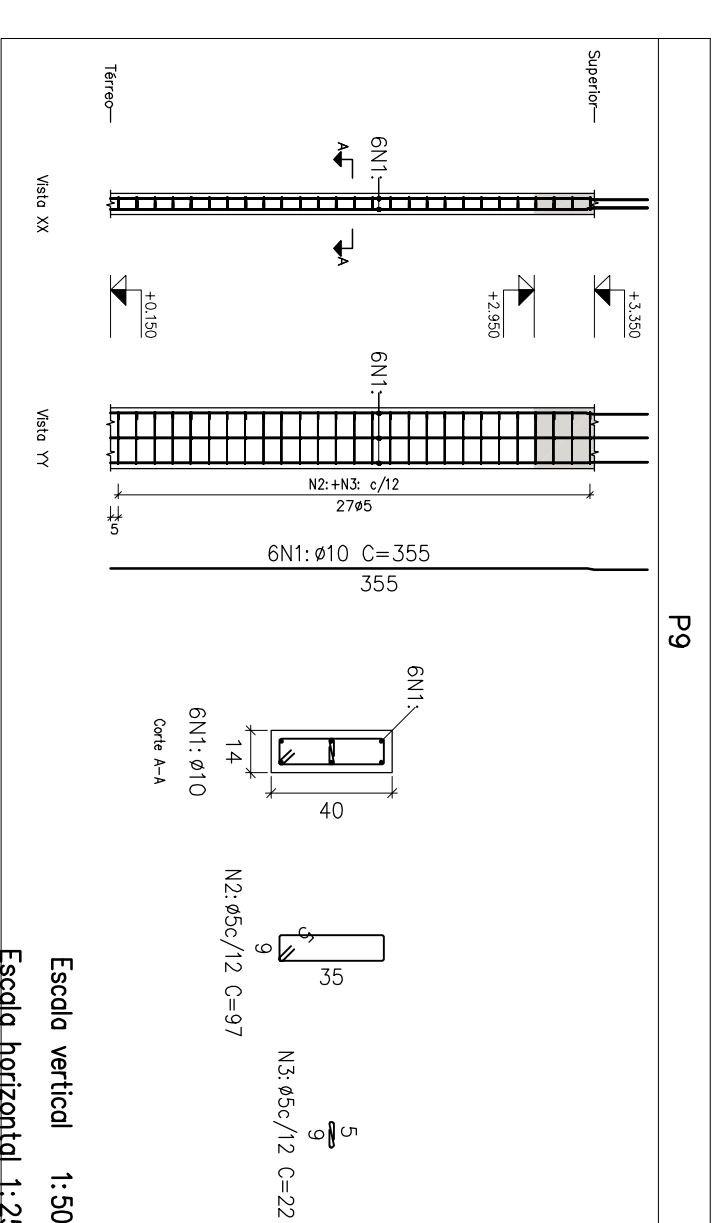


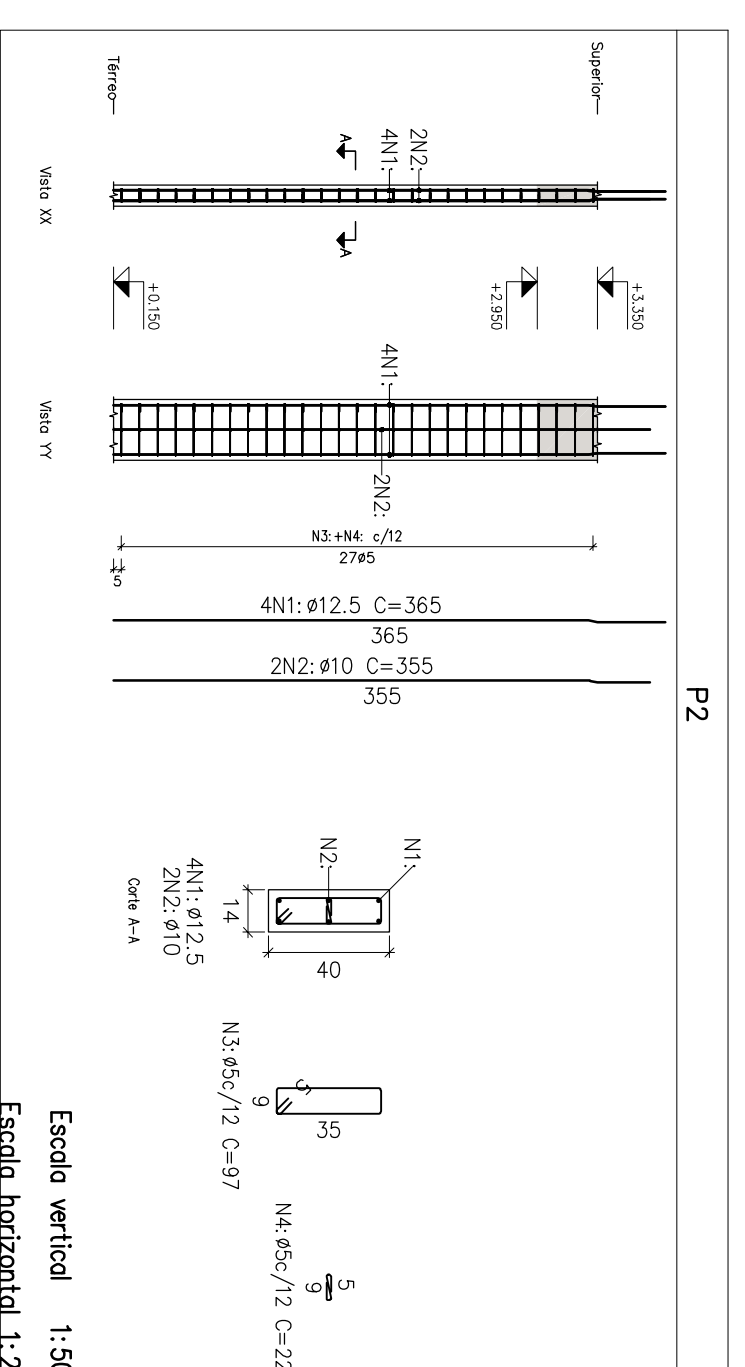
Escada vertical 1:50
Escada horizontal 1:25



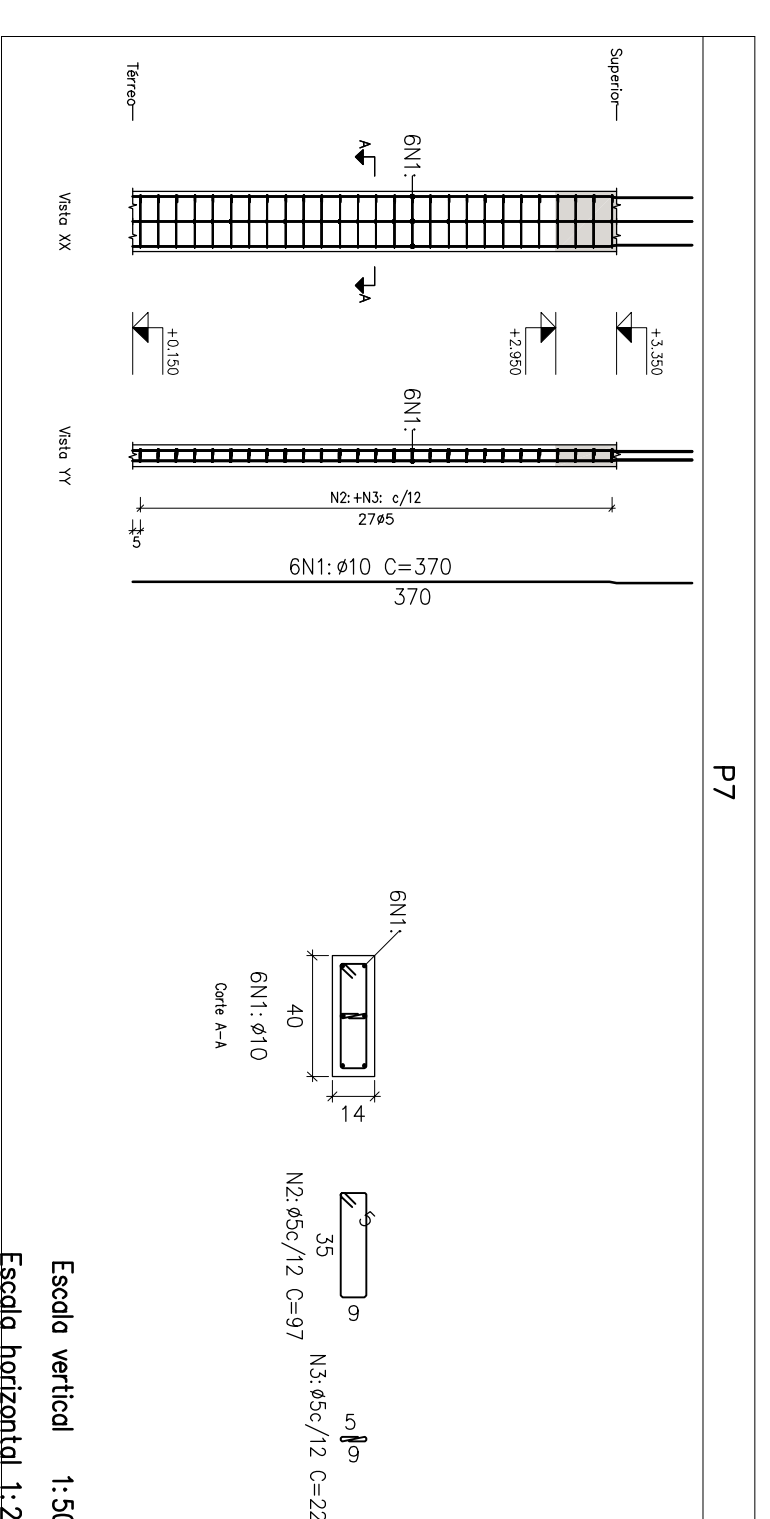
Escada vertical 1:50
Escada horizontal 1:25



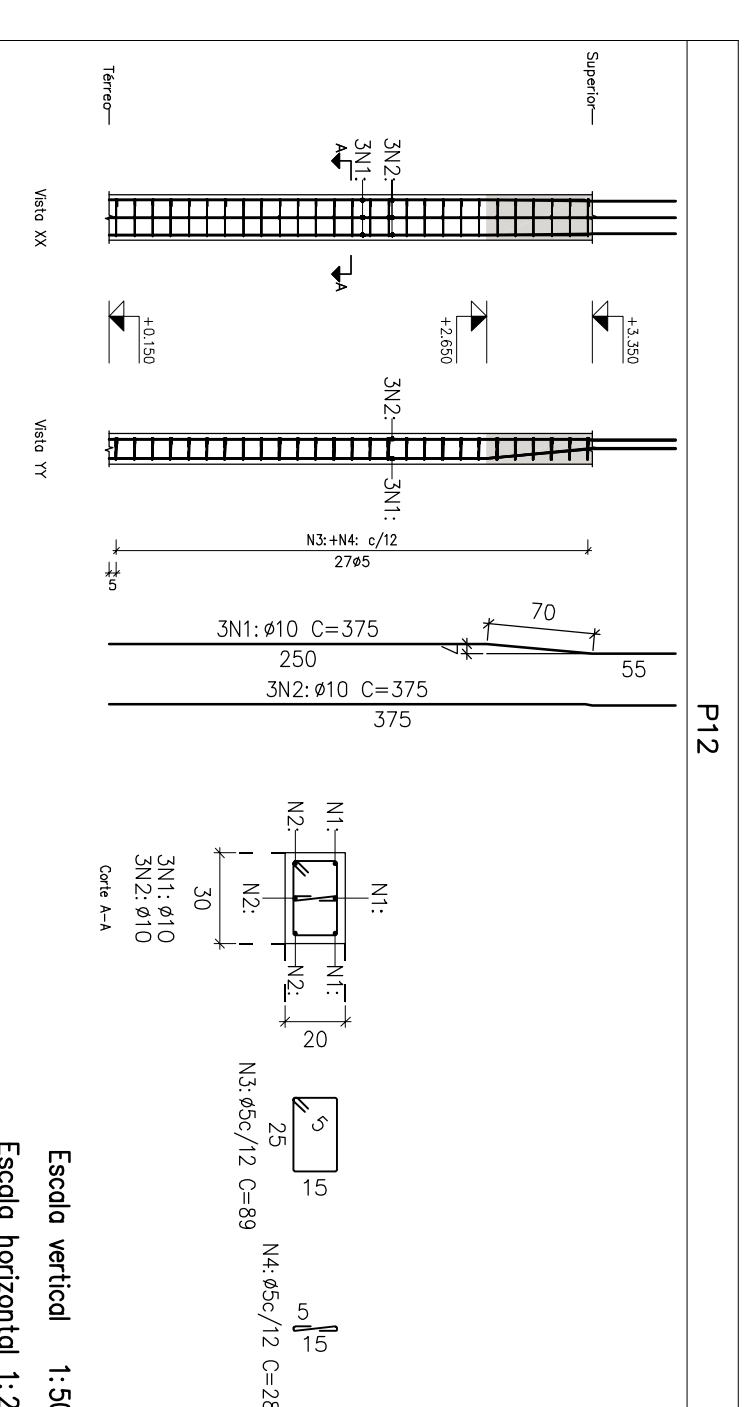
Escada vertical 1:50
Escada horizontal 1:25



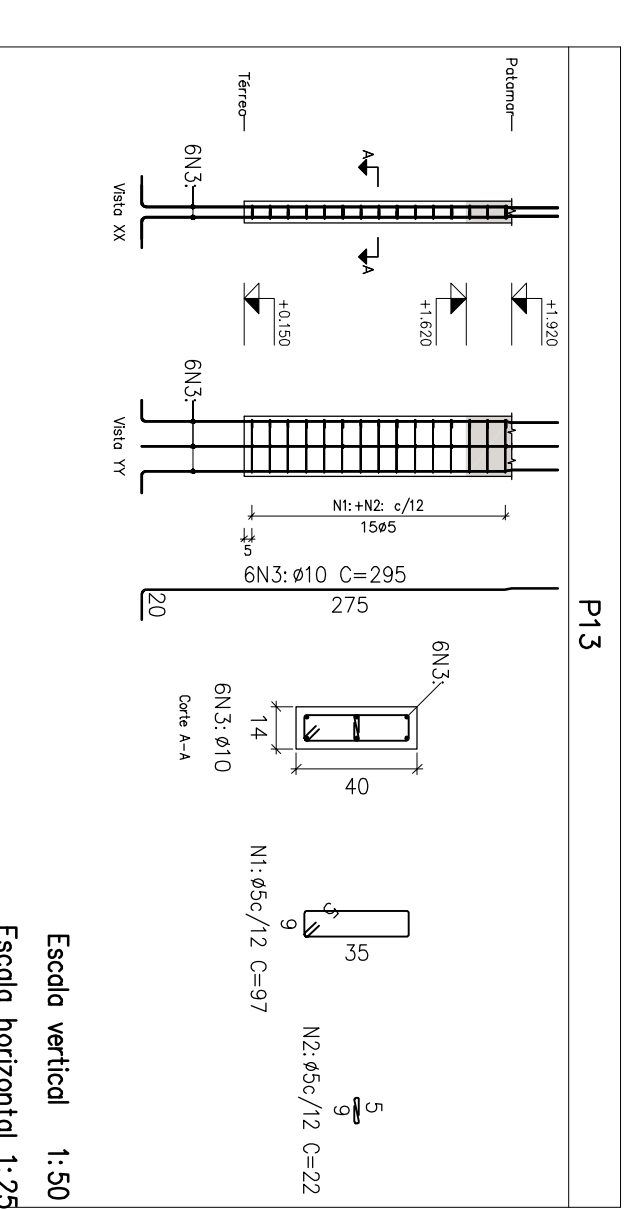
Escada vertical 1:50
Escada horizontal 1:25



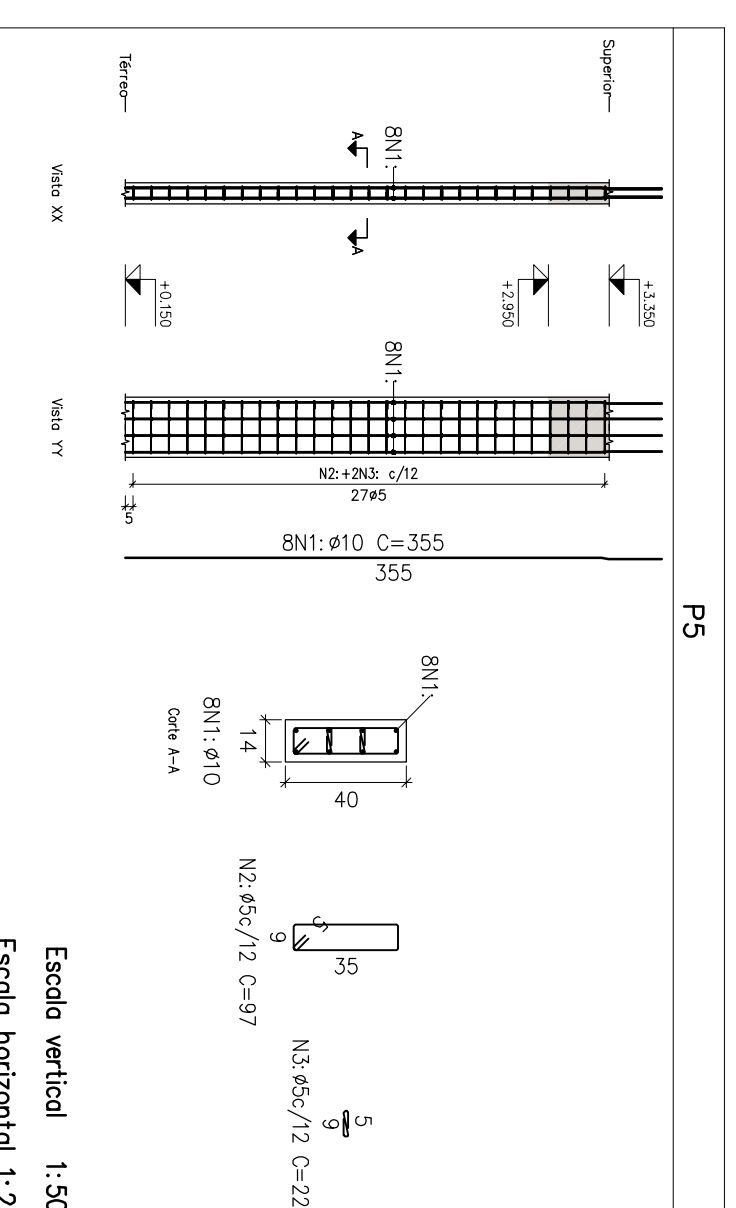
Escada vertical 1:50
Escada horizontal 1:25



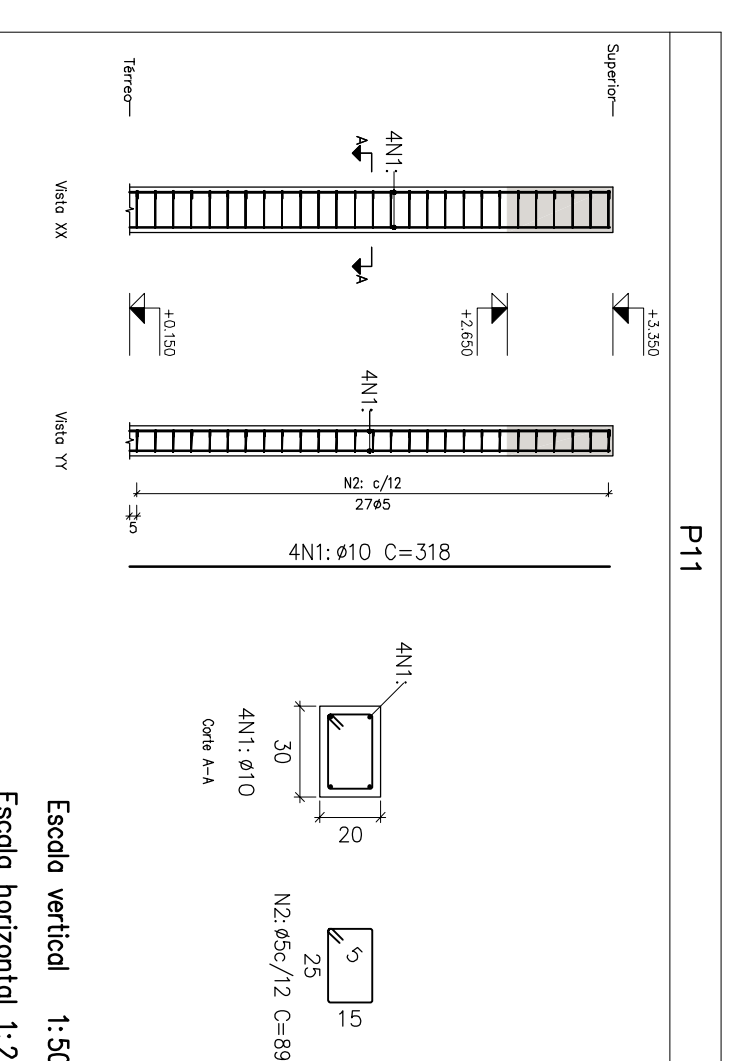
Escada vertical 1:50
Escada horizontal 1:25



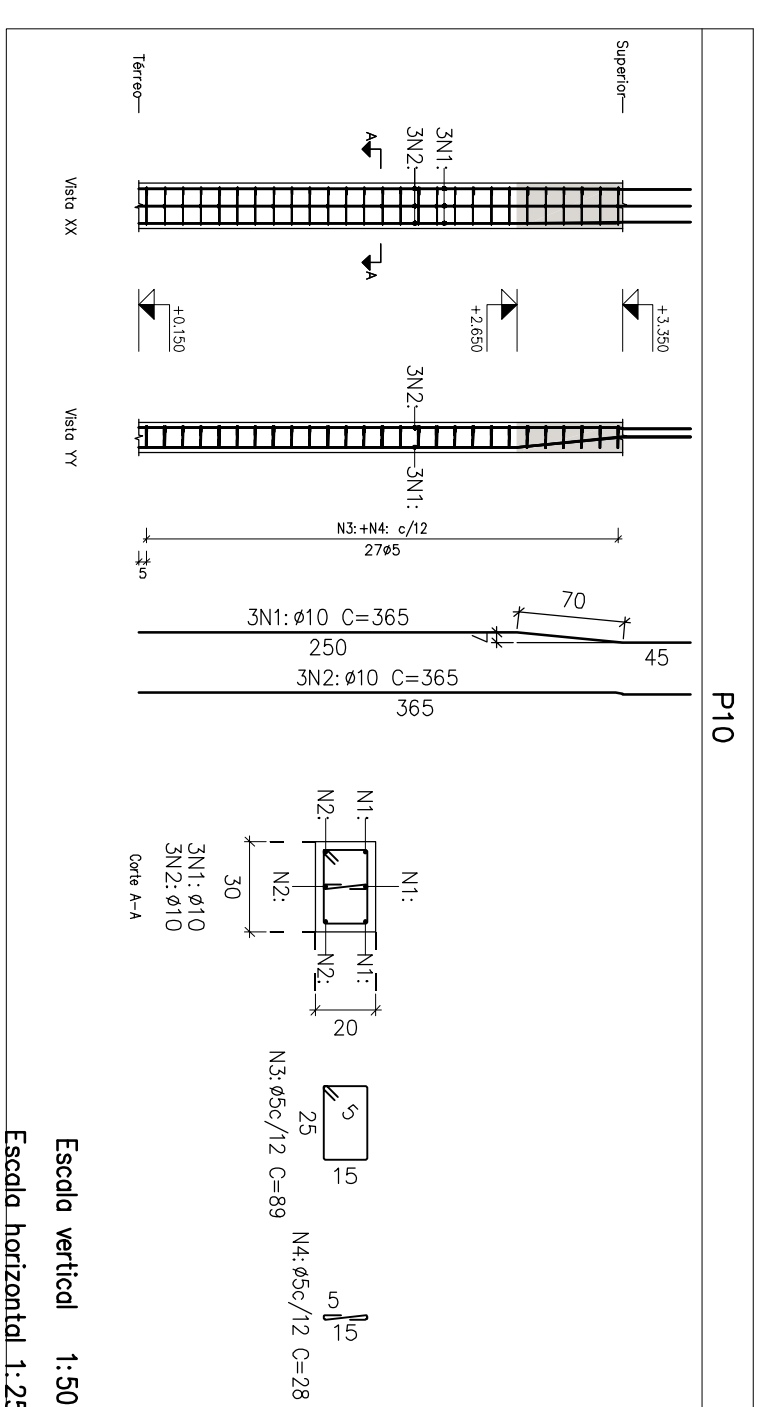
Escada vertical 1:50
Escada horizontal 1:25



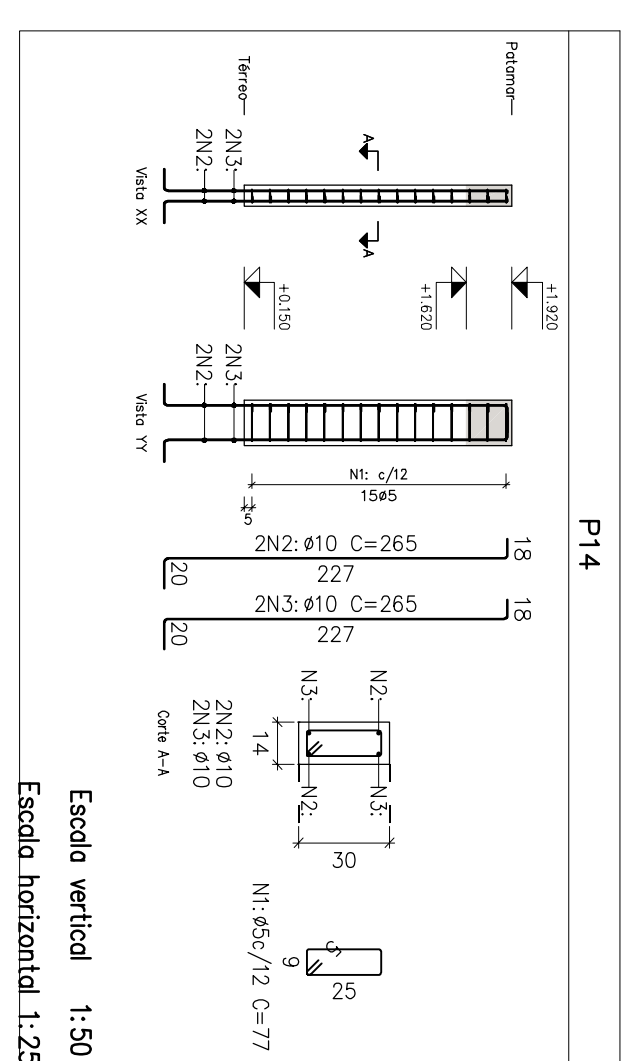
Escada vertical 1:50
Escada horizontal 1:25



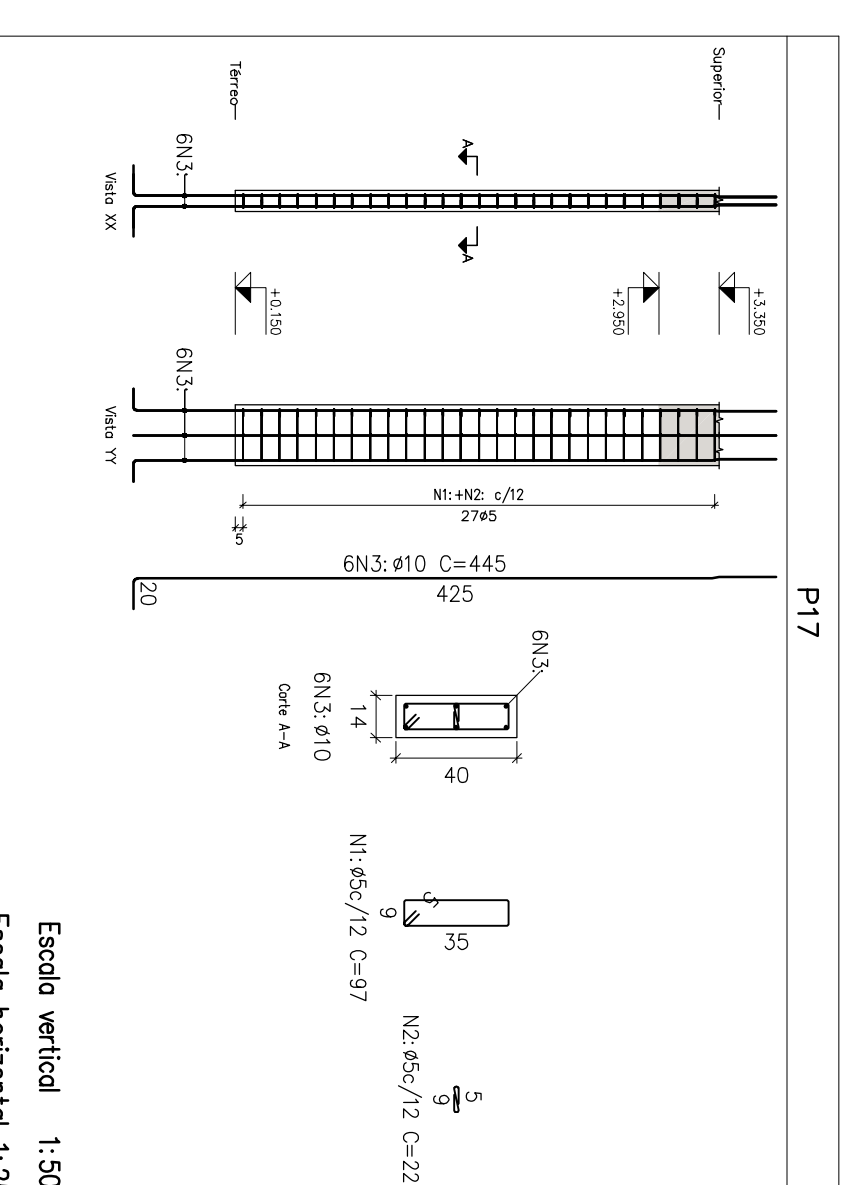
Escada vertical 1:50
Escada horizontal 1:25



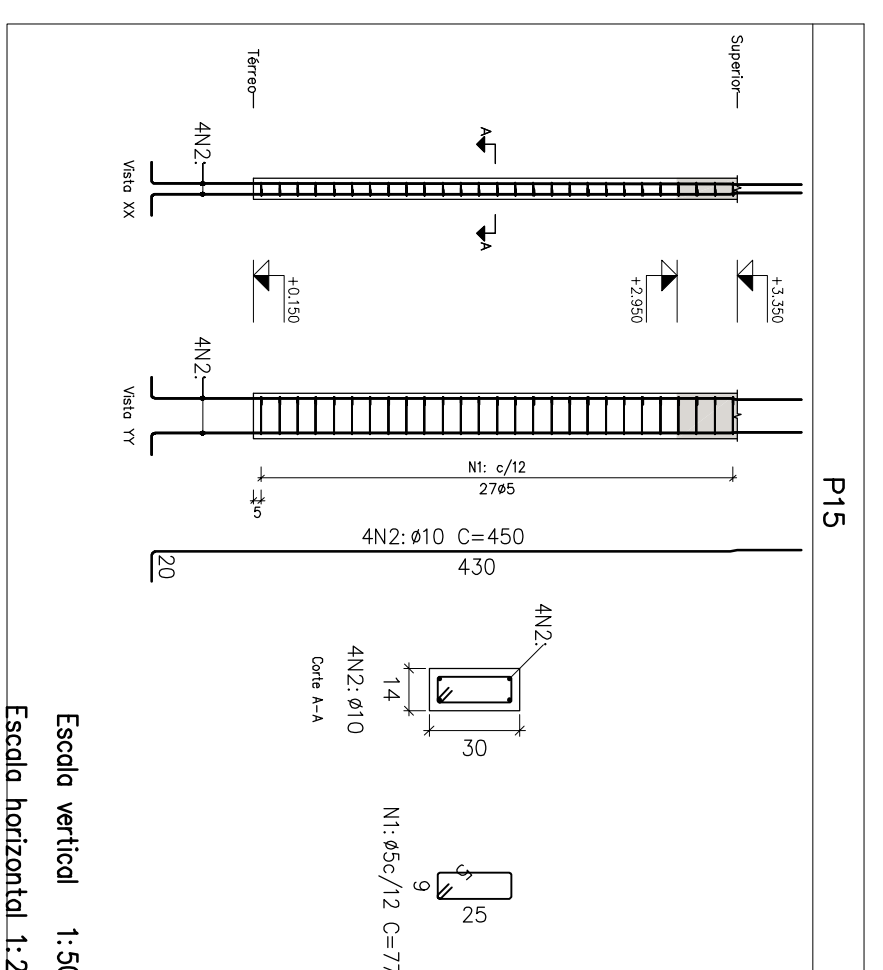
Escada vertical 1:50
Escada horizontal 1:25



Escada vertical 1:50
Escada horizontal 1:25



Escada vertical 1:50
Escada horizontal 1:25



Escada vertical 1:50
Escada horizontal 1:25

Rebar	Comp. (kg)	Quant. (un)	Total (kg)
CA-50 #10	3375	141	4758.75
CA-60 #12.5	280	31	8680.00
CA-60 #8	3313	64	21203.20
Total			34641.95

Item	Quant. (un)	Valor (R\$)	Total (R\$)
1	141	1410.00	19821.00
2	31	1080.00	33480.00
3	64	21203.20	1357064.00
Total			1490545.00

Platô: Patamar
Concreto: C30, usinador
Aço das barras: CA-50 e CA-60
Aço das estribos: CA-50 e CA-60

Concreto 30MPa

NÚMERO	DATA	DESCRIÇÃO	DESENHO	VERIF.

PROJETO ESTRUTURAL

Pró Eng
ENGENHARIA E ARQUITETURA
Rua Joaquim Coelho, 100 - Jd. São Paulo - São Paulo/SP - Brasil
CNPJ nº 07.012.000/00-5
CRA/SC 118224-2

ESCOLA MUNICIPAL PROF. ALAÍDE DA SILVA MAFRA
Rua Joaquim Coelho, 100 - Jd. São Paulo - São Paulo/SP - Brasil
CNPJ nº 32.892.373/0001-89

CONTÉUDO	ÁREA	DATA	FRANCHA	ESCALA
168 17m²	168 17m²	08/2019	439	INDIC.