

## REVISÕES

NÚMERO	DATA	DESCRIÇÃO	DESENHO	VERIF.

## PROJETO ESTRUTURAL



**CREA/SC 120.020-5** Rua dos Ferroviários, 279 - Tubarão / SC  
**CAU/SC 34701-9** proengengenharia@live.com  
 (48)3626-1466

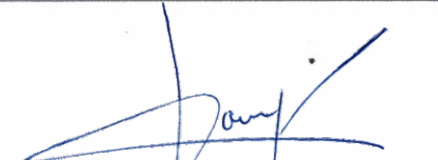
### EQUIPE TÉCNICA:

Eng.º Civil Celso Zanoni Filho  
 CREA/SC 061.511-0  
 Eng.º Civil Jéssica Tartari da Silva  
 CREA/SC 147.347-0  
 Eng.º Eletricista Eduardo Marcelo da Silva  
 CREA/SC 107.293-8  
 Eng.º Mecânico Fábio Domingos Guimarães  
 CREA/SC 075.436-1  
 Arquiteto e Urbanista David Tartari  
 CAU/SC A118224-2

RESPONSÁVEL  
PELO PROJETO

  
 Eng.º Civil Celso Zanoni Filho

PROPRIETÁRIO  
LOCAL DA OBRA

  
 Pref. Mun. Governador Celso Ramos  
 CNPJ: 82/892.373/0001-89

**Mirante Fazenda da Armação**

Rodovia Nézio Manoel Miranda  
 Governador Celso Ramos /SC

APROVAÇÃO

CONTEÚDO

- Pilar chega em térreo

-  
-  
-  
-

ESCALA

**INDIC.**

PRANCHA

**PI 01 / 03**

CAD

C.Z.F

ÁREA

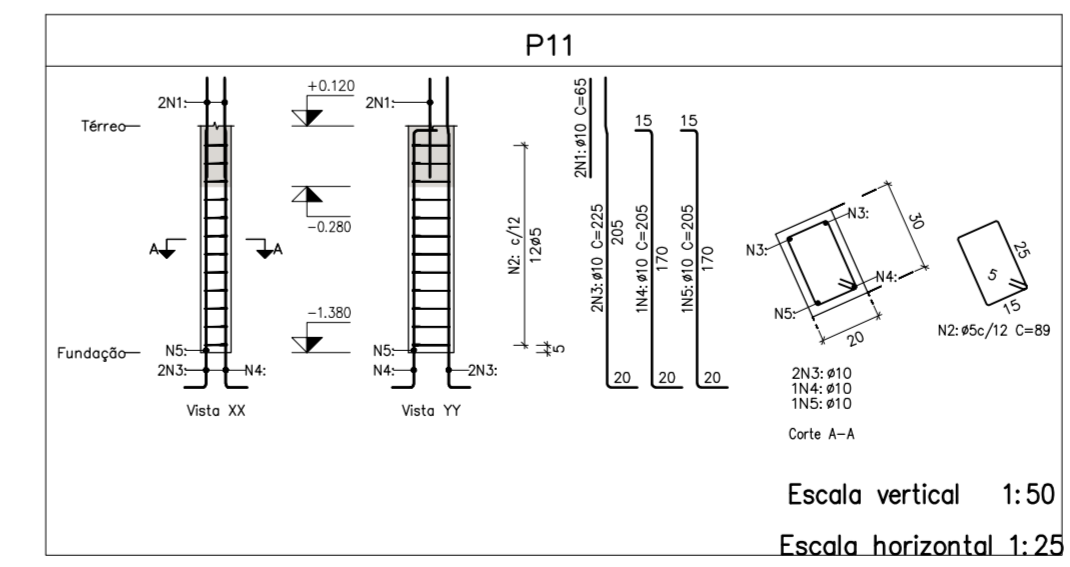
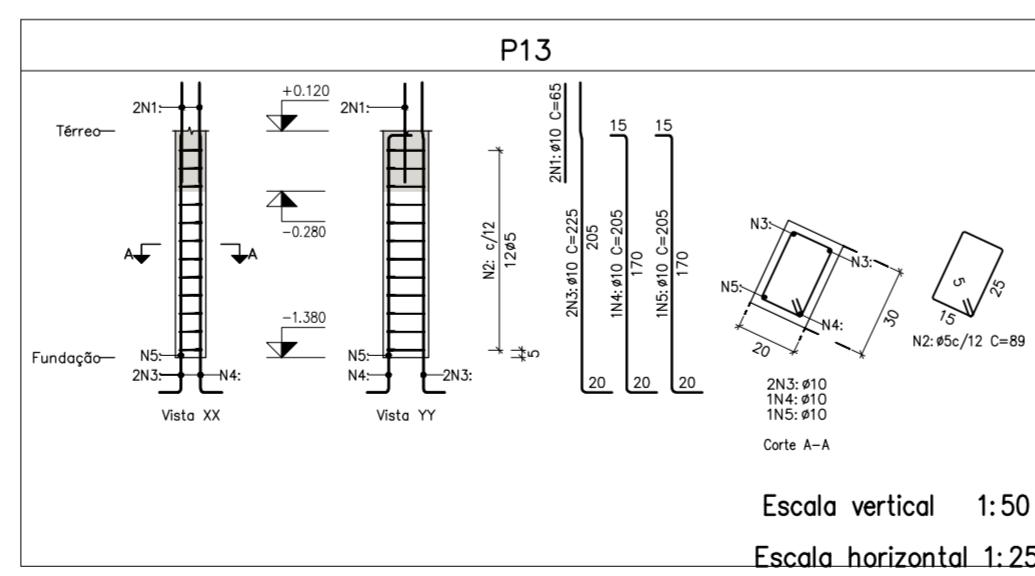
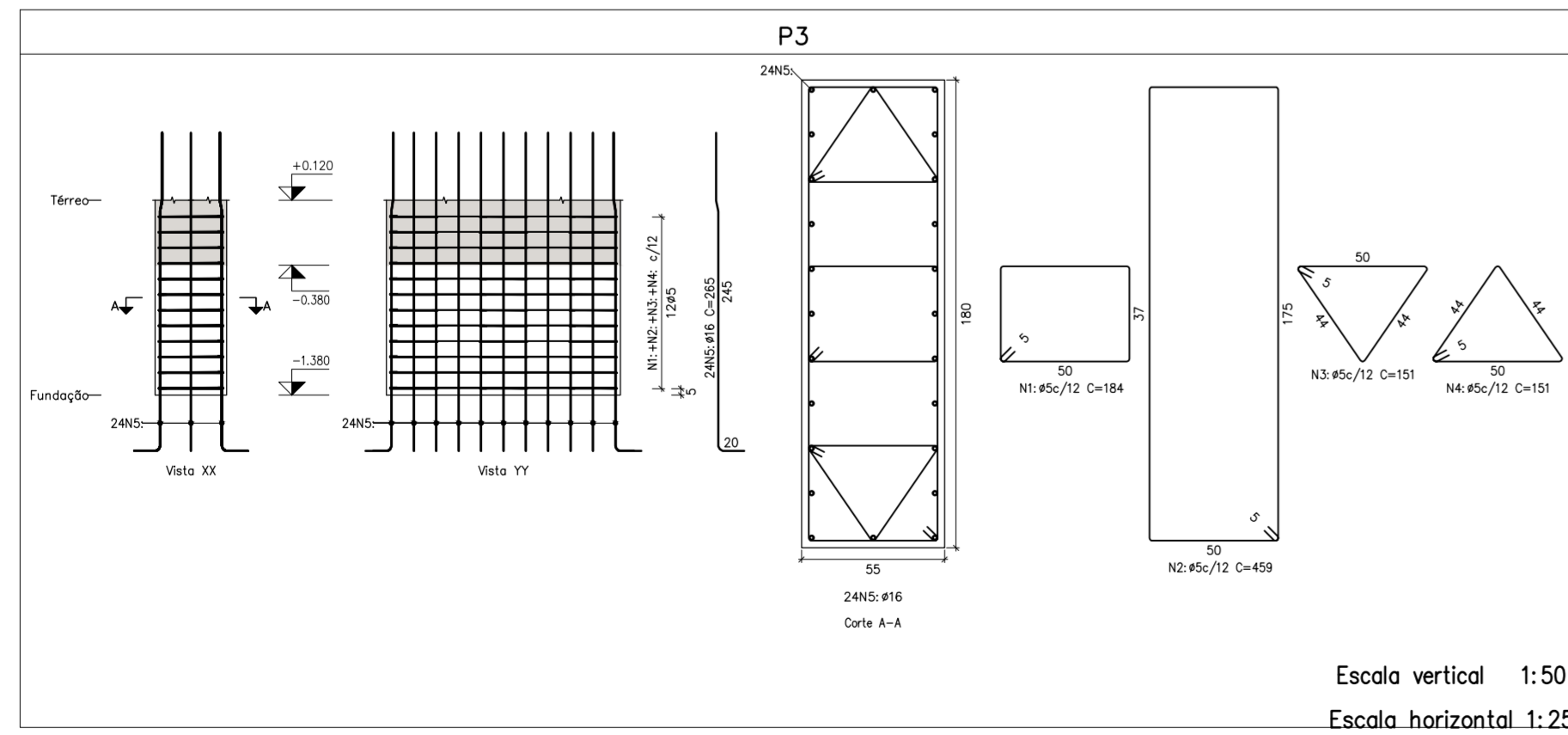
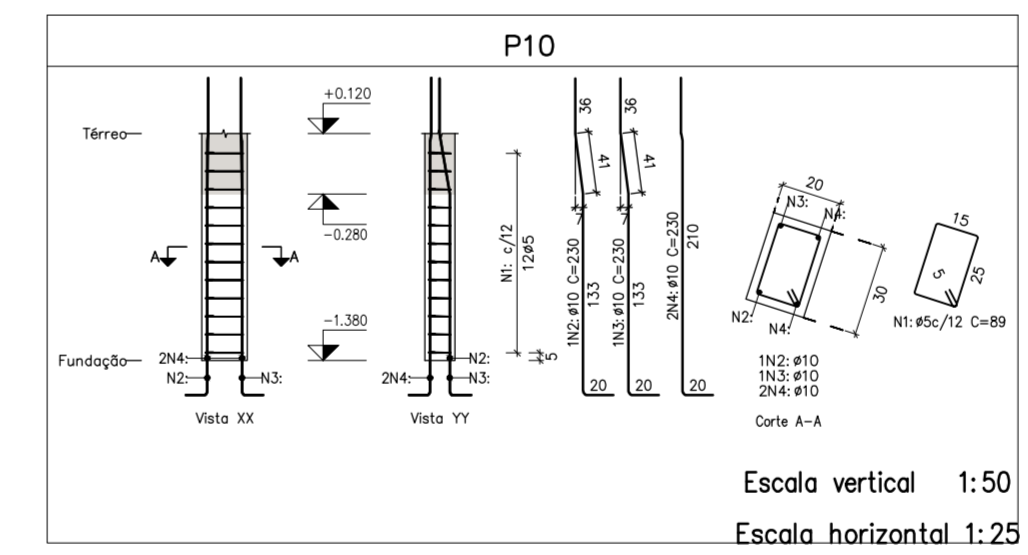
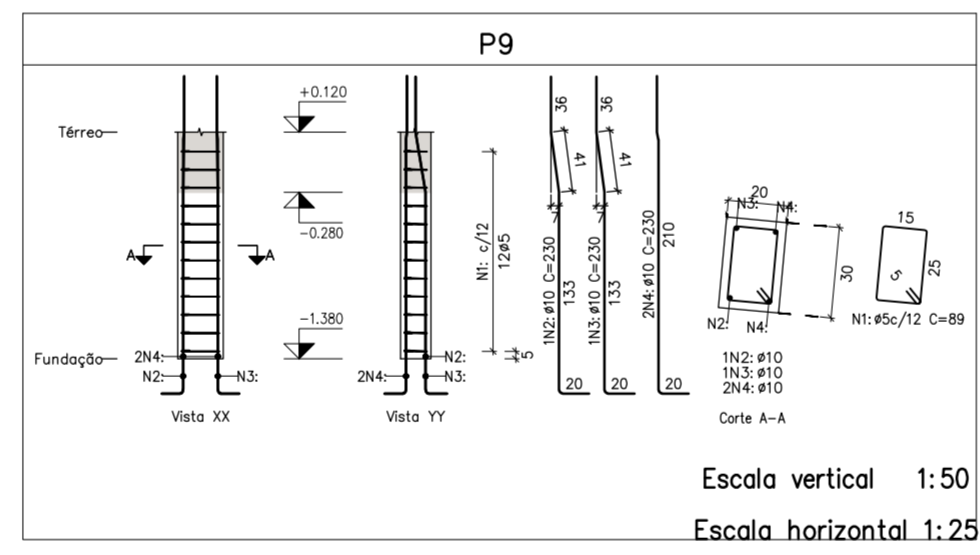
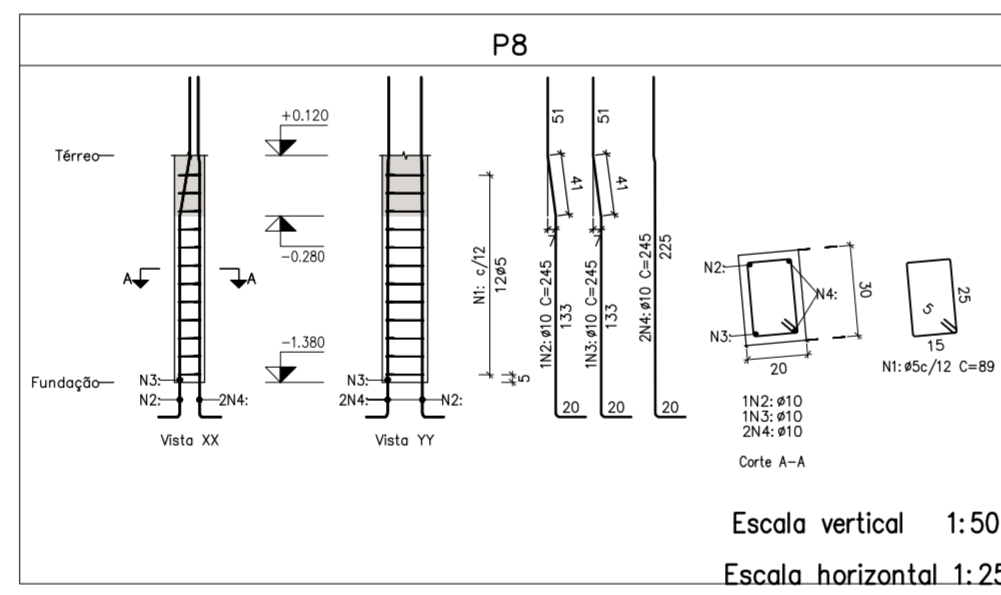
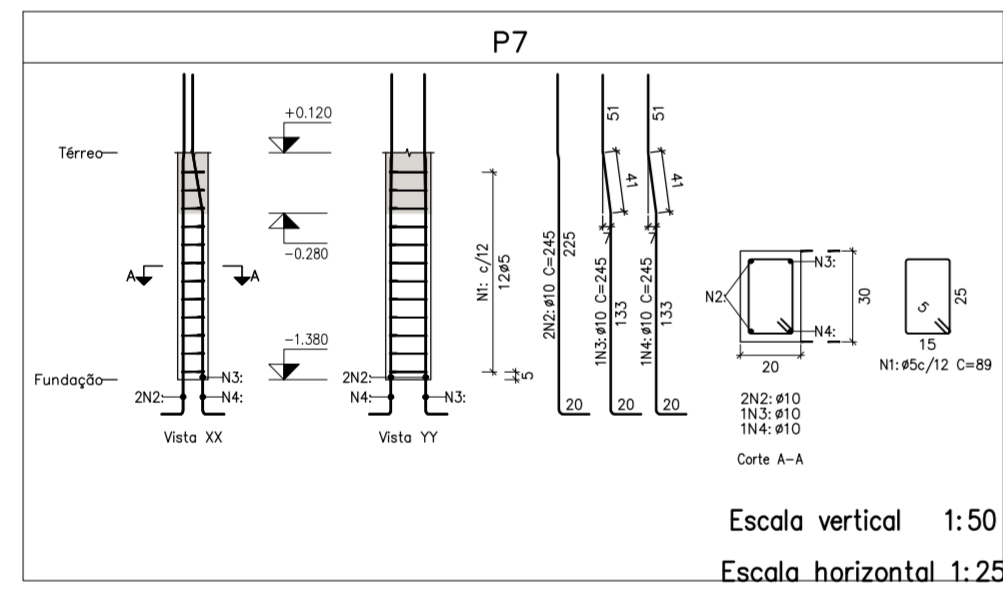
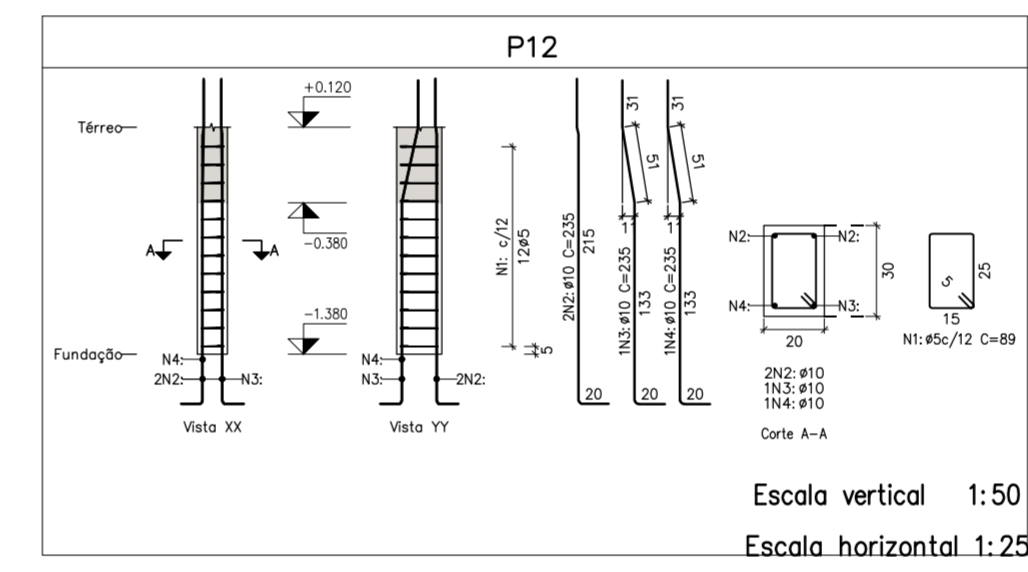
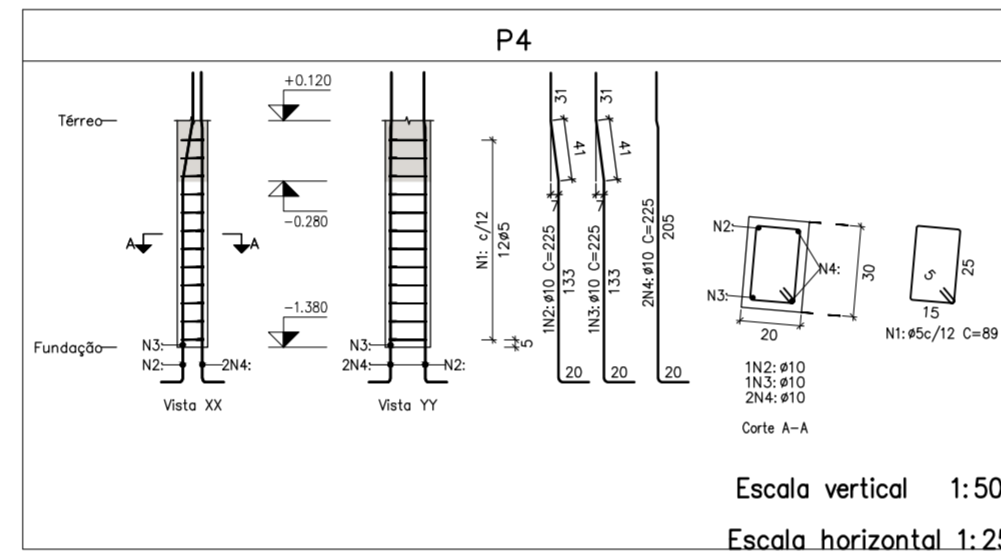
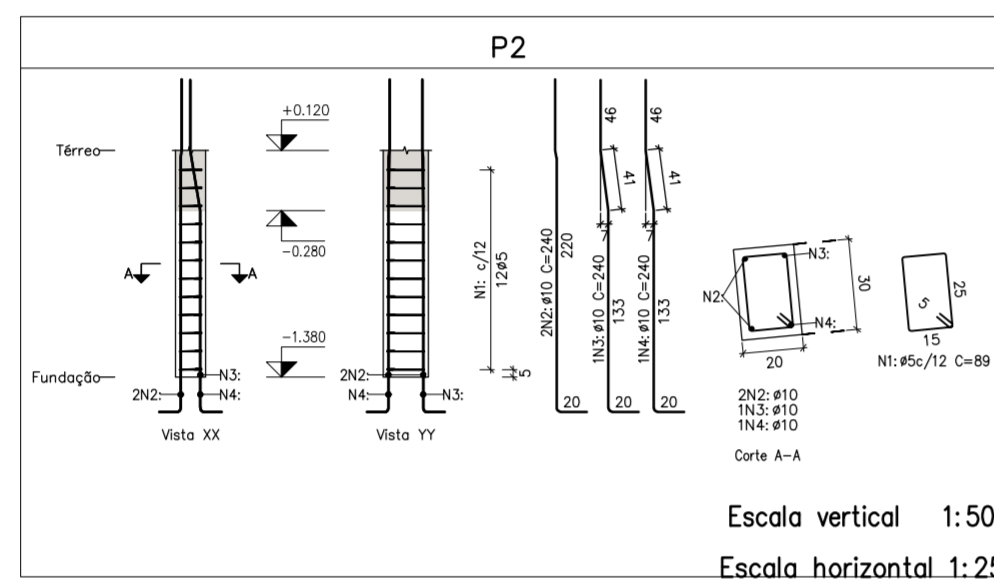
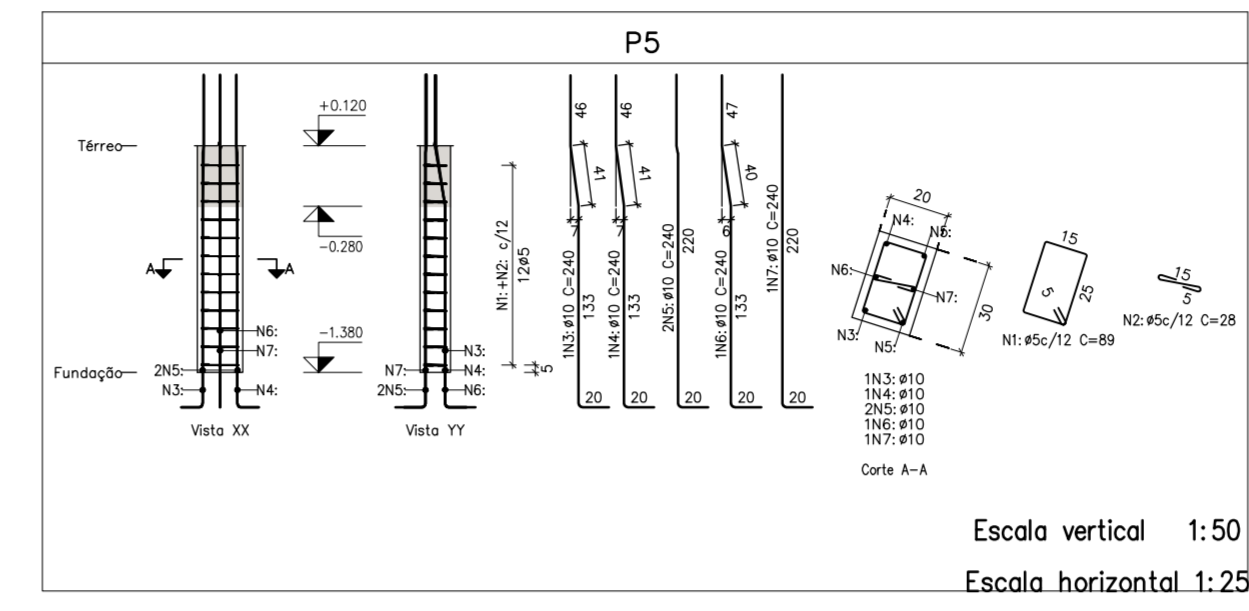
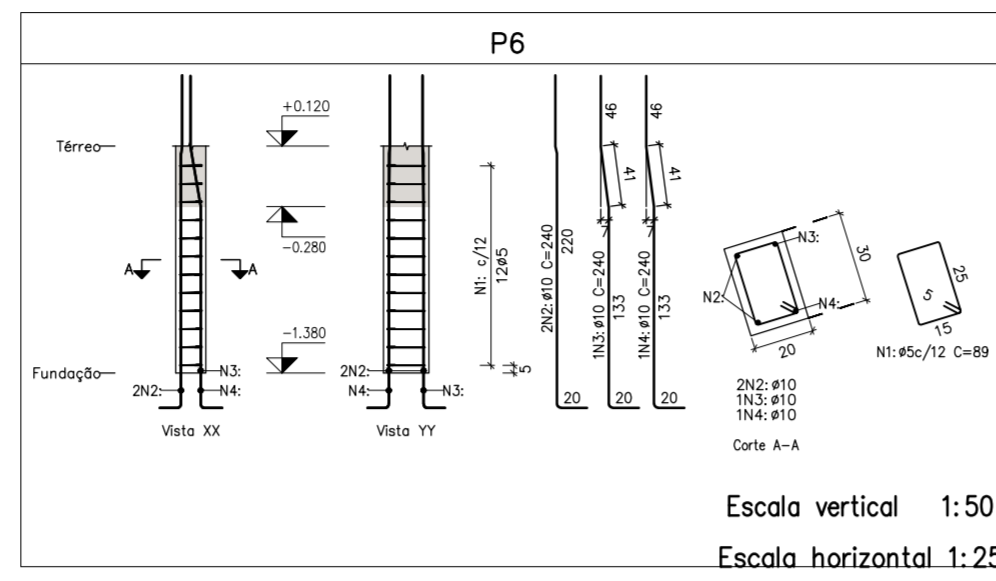
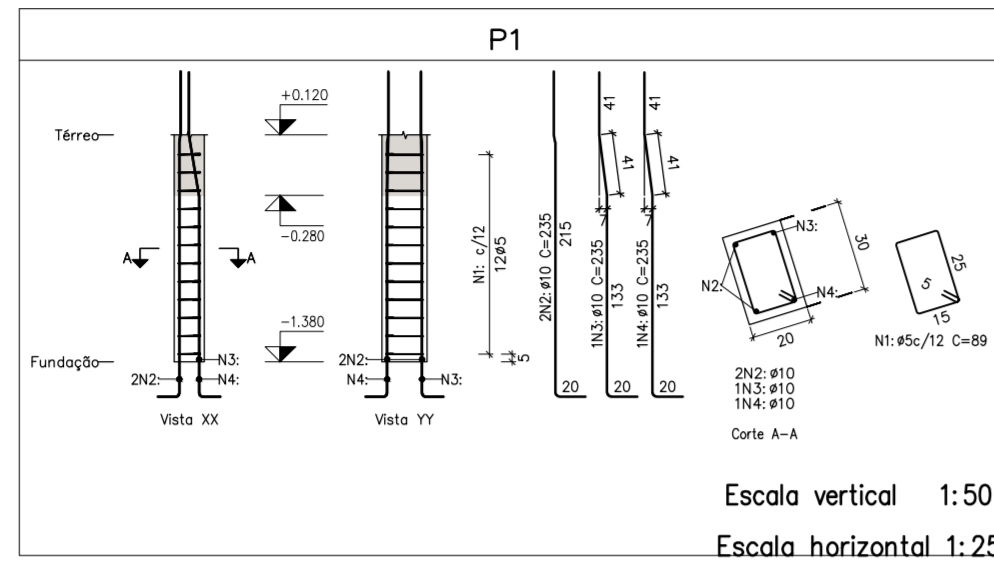
182,73m<sup>2</sup>

DATA

Dez/2019

OBRA

466



Elemento	Pos.	Diam.	Q.	Dob. (cm)	Reo (cm)	Dob. (cm)	Comp. (cm)	Total (cm)	CA-50 (kg)	CA-60 (kg)
P13	1	Ø10	2	65	130	0.8	1.7			
	2	Ø5	12	89	1068					
	3	Ø10	2	225	450	2.8				
	4	Ø10	1	205	205	1.3				
	5	Ø10	1	205	205	1.3				
Total+10%									6.8	1.9

Elemento	Pos.	Diam.	Q.	Dob. (cm)	Reo (cm)	Dob. (cm)	Comp. (cm)	Total (cm)	CA-50 (kg)	CA-60 (kg)	
P1	1	Ø5	12	89	1068						
	2	Ø10	2	235	470	2.9					
	3	Ø10	1	235	235	1.4					
	4	Ø10	1	235	235	1.4					
	Total+10%									6.3	1.9
P2	1	Ø5	12	89	1068						
	2	Ø10	2	240	480	3.0					
	3	Ø10	1	240	240	1.5					
	4	Ø10	1	240	240	1.5					
	Total+10%									6.6	1.9
P6	1	Ø5	12	89	1068						
	2	Ø10	2	240	480	3.0					
	3	Ø10	1	240	240	1.5					
	4	Ø10	1	240	240	1.5					
	Total+10%									6.6	1.9
P3	1	Ø5	12	89	1068						
	2	Ø5	12	184	2208	3.5					
	3	Ø5	12	459	5508	8.6					
	4	Ø5	12	151	1812	2.8					
	5	Ø16	24	265	6360	10.4					
Total+10%									10.4	19.5	
P4	1	Ø5	12	89	1068						
	2	Ø10	1	225	225	1.4					
	3	Ø10	1	225	225	1.4					
	4	Ø10	2	225	450	2.8					
	Total+10%									6.2	1.9
P5	1	Ø5	12	89	1068						
	2	Ø5	12	28	336	0.5					
	3	Ø10	1	240	240	1.5					
	4	Ø10	2	240	480	3.0					
	6	Ø10	1	240	240	1.5					
7	Ø10	1	240	240	1.5						
Total+10%									9.9	2.4	
P7	1	Ø5	12	89	1068						
	2	Ø10	2	245	490	3.0					
	3	Ø10	1	245	245	1.5					
	4	Ø10	1	245	245	1.5					
	Total+10%									6.6	1.9
P8	1	Ø5	12	89	1068						
	2	Ø10	1	245	245	1.5					
	3	Ø10	1	245	245	1.5					
	4	Ø10	2	245	490	3.0					
	Total+10%									6.6	1.9
P9	1	Ø5	12	89	1068						
	2	Ø10	1	230	230	1.4					
	3	Ø10	1	230	230	1.4					
	4	Ø10	2	230	460	2.8					
	Total+10%									6.2	1.9
P10	1	Ø5	12	89	1068						
	2	Ø10	1	230	230	1.4					
	3	Ø10	1	230	230	1.4					
	4	Ø10	2	230	460	2.8					
	Total+10%									6.2	1.9
P11	1	Ø10	2	65	130	0.8					
	2	Ø5	12	89	1068						
	3	Ø10	2	225	450	2.8					
	4	Ø10	1	205	205	1.3					
	5	Ø10	1	205	205	1.3					
Total+10%									6.8	1.9	
P12	1	Ø5	12	89	1068						
	2	Ø10	2	235	470	2.9					
	3	Ø10	1	235	235	1.4					
	4	Ø10	1	235	235	1.4					
	Total+10%									6.3	1.9
									Ø5:	0.0	42.8
									Ø10:	81.1	0.0
									Ø16:	110.4	0.0
									Total:	191.5	42.8

Resumo Apo Pilaes	Comp. total (m)	Peso+10% (kg)	Total
CA-50 Ø10	119.2	81	191
CA-60 Ø5	63.6	110	42
Total	244.9	42	233

Planta: Térreo  
 Concreto: C30, usina.rigor  
 Aço das barras: CA-50 e CA-60  
 Aço dos estribos: CA-50 e CA-60

### Concreto 30MPa

REVISÕES				
NÚMERO	DATA	DESCRIÇÃO	DESENHO	VERIF.

### PROJETO ESTRUTURAL



**EQUIPE TÉCNICA:**  
 Eng.º Civil Celso Zanoni Filho  
 CREA/SC 061.511-0  
 Eng.º Civil Jéssica Tartari da Silva  
 CREA/SC 147.347-0  
 Eng.º Eletricitista Eduardo Marcelo da Silva  
 CREA/SC 107.293-8  
 Eng.º Mecânico Fábio Domingos Guimarães  
 CREA/SC 075.436-1  
 Arquiteto e Urbanista David Tartari  
 CAU/SC A118224-2

RUA DAS FERROVIÁRIAS, 279 - TUBARÃO / SC  
 CREA/SC 120.020-5  
 CAU/SC 34701-9

RESPONSÁVEL PELA PROPOSTA	Eng.º Civil Celso Zanoni Filho
PROPRIETÁRIO LOCAL DA OBRA	Pref. Mun. Governador Celso Ramos CNPJ: 82.892.373/0001-89 <b>Mirante Fazenda da Armação</b> Rodovia Nélio Manoel Miranda Governador Celso Ramos / SC
CONTEÚDO	Pilar chega em Térreo
ÁREA	182,73m²
DATA	Dez/2019
ORÇ.	466
FRANQUIA	INDIC.
CAU	PI 01 / 03